

@CWCHAMPIONS

Coventry and Warwickshire

Champions



Adam Dent, Advent Communications

@CWCHAMPIONS

#champs march

[www.coventry-warwickshire.co.uk](http://www.coventry-warwickshire.co.uk)



@CWCHAMPIONS

Coventry and Warwickshire

Champions

@CWCHAMPIONS

Andy Hardy, UHCW

# More Than Just a Hospital...

Presentation to Coventry & Warwickshire Champions

Andy Hardy, CEO

25 March 2015

# University Hospital, Coventry



# Hospital of St Cross, Rugby

University Hospitals   
Coventry and Warwickshire  
NHS Trust



# Serving Our Population: Facts & Figures

- Large employer
  - 9,300 staff across two sites
- Major economic player
  - Turnover £550 million
- Vital statistics
  - 1,250 beds
  - 33 theatres
  - 609,000 out patient appointments
  - 76,000 planned inpatients and day cases
  - 75,000 emergency inpatients
  - 140,000 A&E attendances
  - 45,000 Children's A&E attendances
  - 41,000 patients operated on in theatres
  - 6,300 babies delivered





## **Our vision:**

To be a national and international leader in healthcare

## **Our mission:**

Care Achieve Innovate

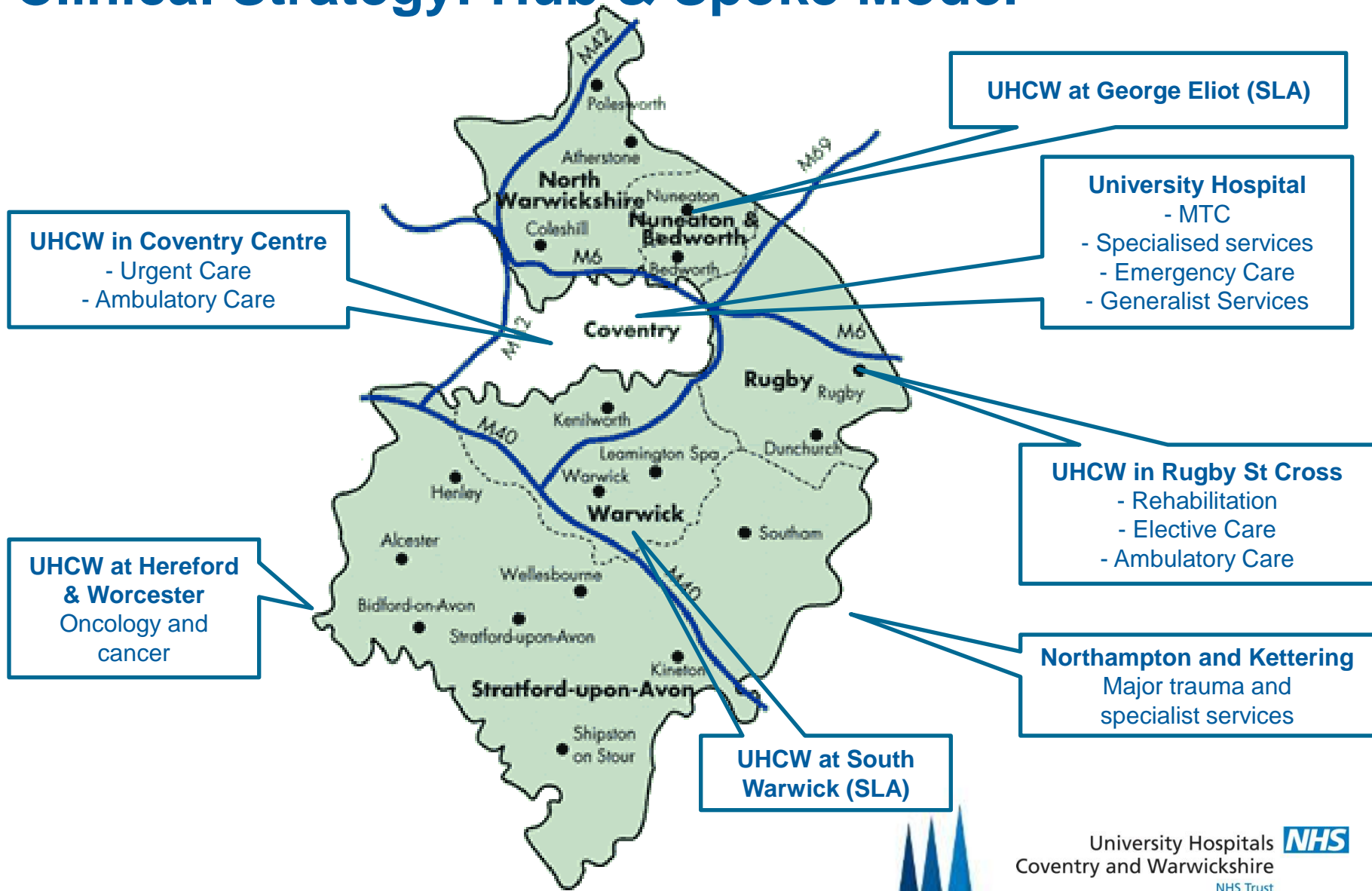
Care: deliver the best care for our patients

Achieve: excellence through education and training

Innovate: through research and learning

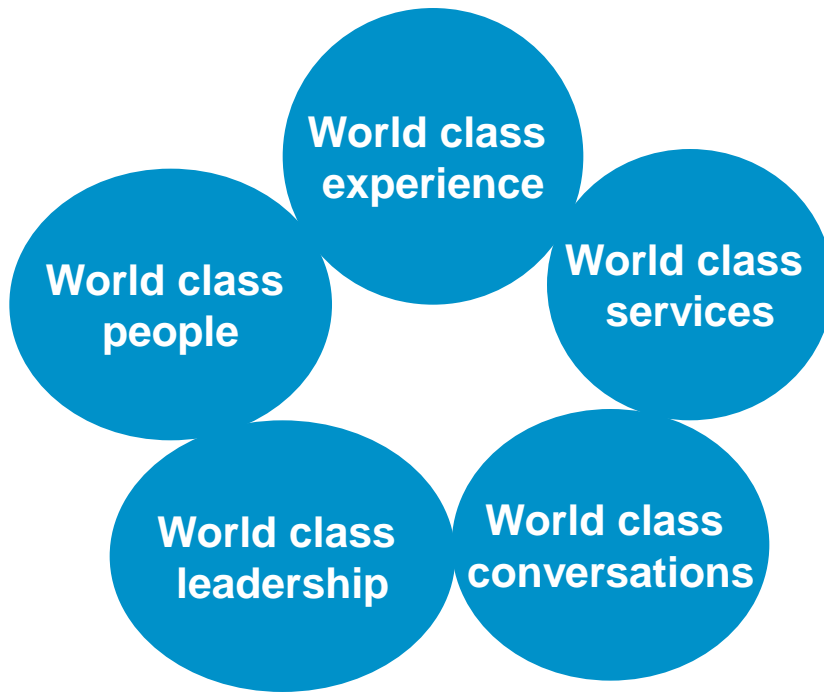
## **Clinical strategy**

# Clinical Strategy: Hub & Spoke Model



# Together Towards World Class

## Workstreams



## Our Values



compassion



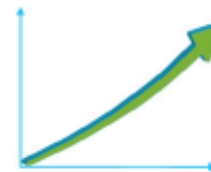
openness



pride



partnership



improve



learn

# Research, Training and Education

- West Midlands Academic Health Science Network
- Links with The University of Warwick and Coventry University
- Bio-Medical Research Unit for Reproductive Health and Human Metabolism Research Unit
- European Neuroendocrine Tumour Centre
- Digital Histopathology – Omnyx
- Surgical Training Centre
- Simulation laboratory
- Dr Foster Global Comparators



# World Class Partners



**SKANSKA**



celesio



THE UNIVERSITY OF  
**WARWICK**



# Five Things to Take Away



Major Trauma Centre



Research Site  
of the Year



Renal Transplantation



Surgical Training



Getting Emergency Care Right

# More Than Just a Hospital...

Presentation to Coventry & Warwickshire Champions

Andy Hardy, CEO

25 March 2015

@CWCHAMPIONS

Coventry and Warwickshire

Champions





JUSTINE THEMAN  
BELGRADE THEATRE

@CWCHAMPIONS

Coventry and Warwickshire

Champions

@CWCHAMPIONS

John Latham, Coventry University



**Coventry**  
University

CW CHAMPIONS

Professor John Latham

# Where we are now

- 26,000 students
- 3,000 staff
- Proud history – Coventry College of Design, Lanchester Polytechnic, Coventry Polytechnic, Coventry University
- Proud present – twice Modern University of the Year
- ***A little bit about me...***
- Lived through and contributed to the evolution from a polytechnic to a business-focused organisation and one of the top 30 universities in the country

# Branching out

- Global presence – offices worldwide, international collaborations and joint ventures
- CU London campus, continuing to grow
- Coventry University College, offering accessible, vocational education
- Pushing perceptions – Scarborough campus



# Links with business

- Worked with more SMEs than any other UK university (over 9000)
- Tech Park – at capacity
- Collaboration with Unipart, creating a ‘faculty on the factory floor.’
- Highly-acclaimed spinout companies, including Serious Games International
- Coventry University Enterprises (CUE) has supported 32 ERDF projects in last five years



# Expanding our estate

- £125m investment in our estates infrastructure
- Engineering & Computing Building and The Hub already built
- New Science and Health Building, complete with ‘super-lab’
- Deal completed at MIPIM for Civic Centre redevelopment, to include new CU HQ, a research hotel and top academic facilities
- Public realm work commencing with City Council





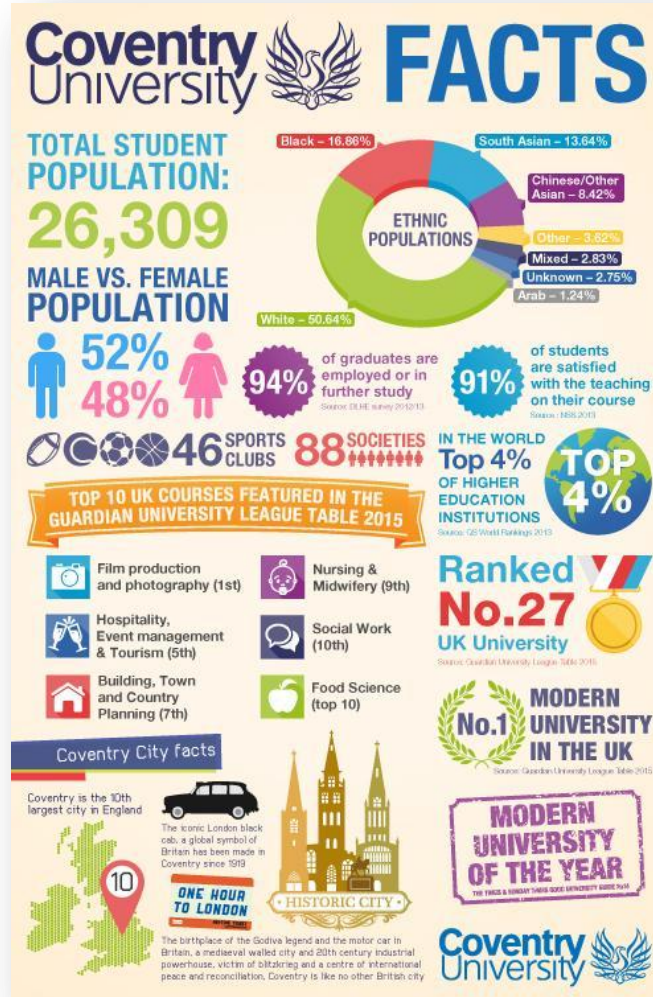
# Economic impact

- Worth £270m to the regional economy every year
- £91.2m annual spend by CU students
- A further £150m spent on research infrastructure between now and 2020
- Introduced over 400 additional high-level jobs over the last ten months.
- Top three employer in Coventry
- 100+ partnerships
- Assisted over 120 start ups

# Vision for the future

- Significant investment in research – new centres representing our strengths
- Expansion of CU London campus
- Growth to 80,000 students (worldwide)
- Top 100 employer by 2018
- Maintain progression up league tables
- ***etc***

# Questions?



@CWCHAMPIONS

Coventry and Warwickshire

Champions

@CWCHAMPIONS

Roger Harrabin, BBC Environmental Analyst

# Coventry and Warwickshire Champions

Wednesday 13<sup>th</sup> May 2015

7.45 – 9.30am

[www.coventry-warwickshire.co.uk](http://www.coventry-warwickshire.co.uk)



@CWCHAMPIONS

Coventry and Warwickshire

Champions