

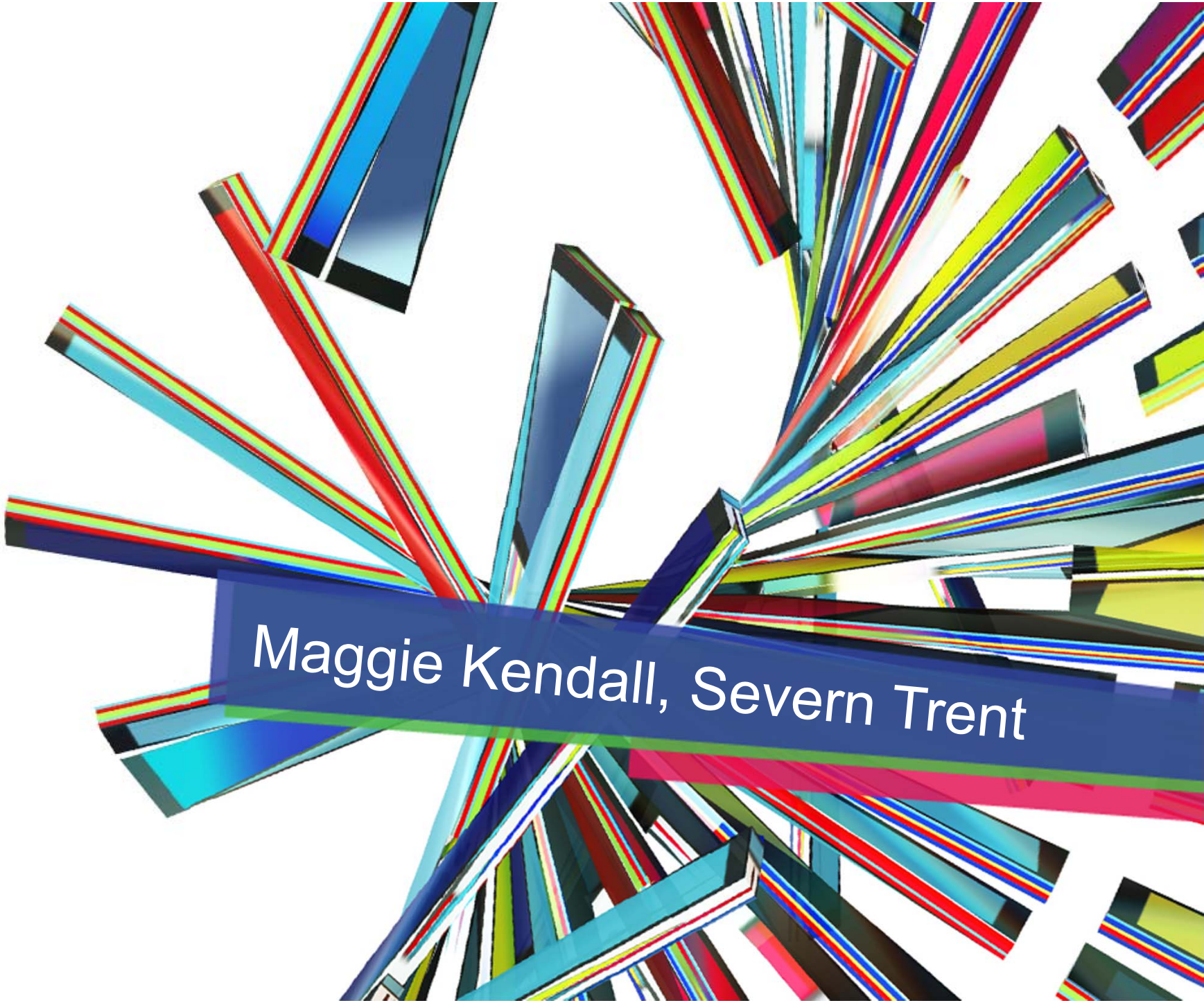


Coventry and Warwickshire

Champions



Adam Dent, Advent Communications



Maggie Kendall, Severn Trent

Why Coventry?



Our Workplaces



Our Workplaces



Our Workplaces

“ ...working together, supported by ways of working that encourage a shift of mindset from “Mine to own,” to “Ours to share” ...”

- ✓ Working in a collaborative way
- ✓ All have access to same facilities, equipment, technology
- ✓ An environment that encourages collaboration
- ✓ An ethos of continuous improvement
- ✓ Enabling the business to deliver with pace



mine to
own
ours to
share

Our Workplaces



Our Workplaces



- 74% of people now using alternative means of transport.



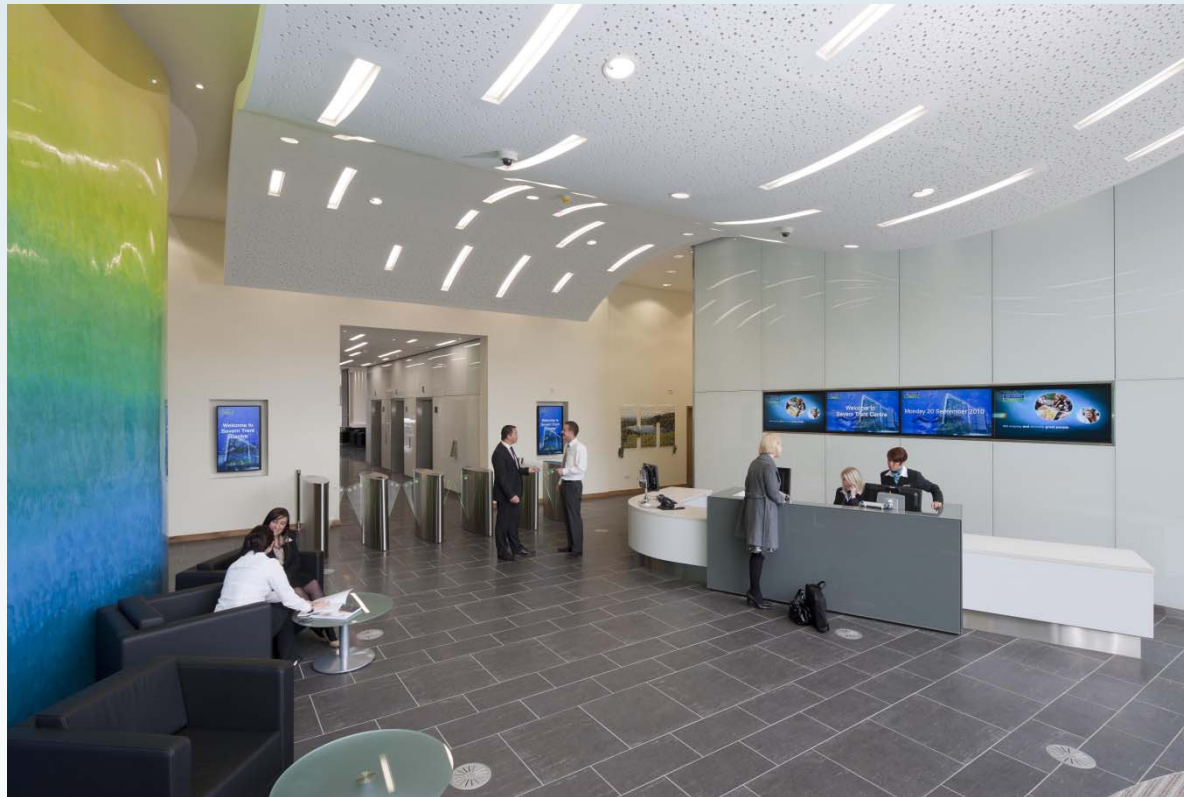
- Travelling reduction between sites equates to 5 metric tonnes of CO₂ per month (24,000 miles)



- Total energy consumption 2650MWh/year against a norm of 3300MWh/year.
- 34% energy reduction from renewable sources.

Our Visitors

We attract over 100 visitors every day and host other businesses who are interested in what we do







Coventry and Warwickshire

Champions

An abstract 3D graphic featuring a dense cluster of colorful, semi-transparent beams in shades of blue, red, yellow, and green. The beams radiate from a central point, creating a sense of depth and movement. A prominent red banner with a slight 3D effect is positioned diagonally across the lower right portion of the image. The banner contains the text "Sir Peter Rigby, CWLEP" in a white, sans-serif font. The background is plain white, which makes the vibrant colors of the beams stand out.

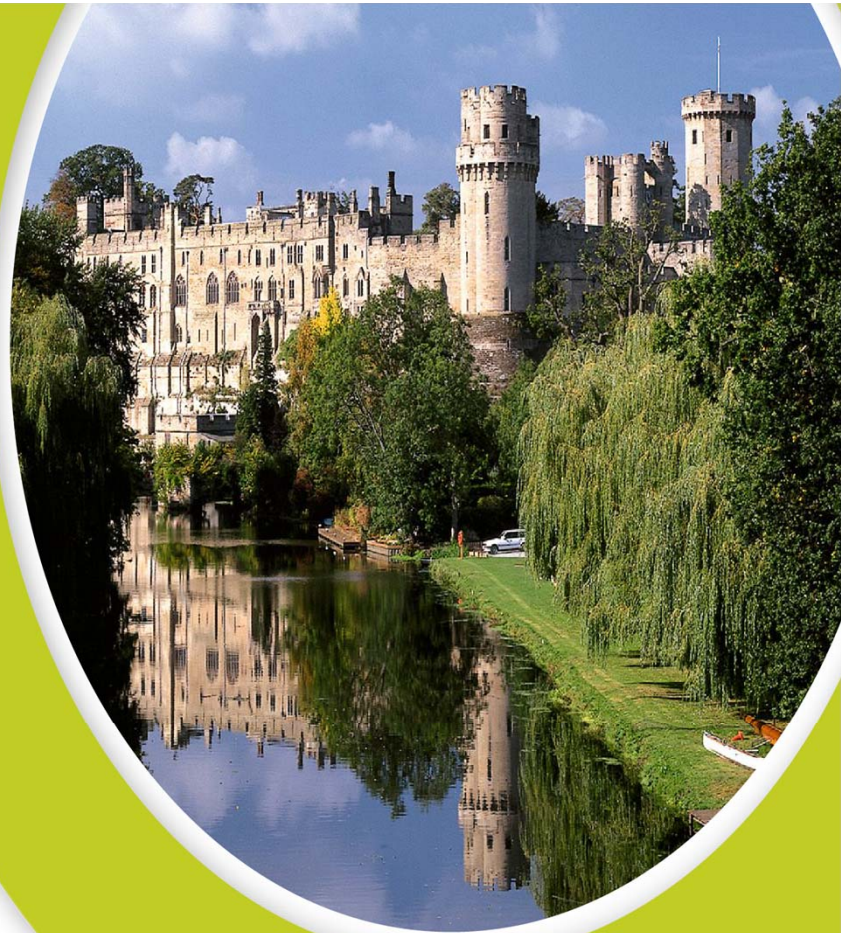
Sir Peter Rigby, CWLEP



Coventry & Warwickshire
Local Enterprise Partnership

Rapid progress over the last 3 months

- New sense of direction and purpose
- Chairman from September
- Legally Incorporated
- Strong Governance and transparent processes
- Chief Executive confirmed and reconstructed Executive
- Premises identified in Warwick town centre





Coventry & Warwickshire
Local Enterprise Partnership

CWLEP Purpose unchanged – Business Led

1. Drive economic growth
2. Help remove barriers to economic growth
3. Help create high value jobs
4. Co-ordinate local Government co-operation and support





Board Composition

PRIVATE SECTOR

Martyn Hollingsworth – Director:
Jaguar Land Rover

Michael Woodhead – Director: E.ON
UK Ltd

Amrik Bhabra - MD: ADECS Ltd / FSB /
Chamber

George Gillespie – CEO: MIRA

Vacancies x 3

Chairman

Sir Peter Rigby – SCH,
Rigby Family Holdings

UNIVERSITIES

Madeleine Atkins–
Vice-Chancellor: Coventry University

Professor Koen Lamberts:
Deputy Vice-Chancellor: University of
Warwick

PUBLIC SECTOR

Cllr John Mutton – Vice Chairman and
Leader Coventry City Council

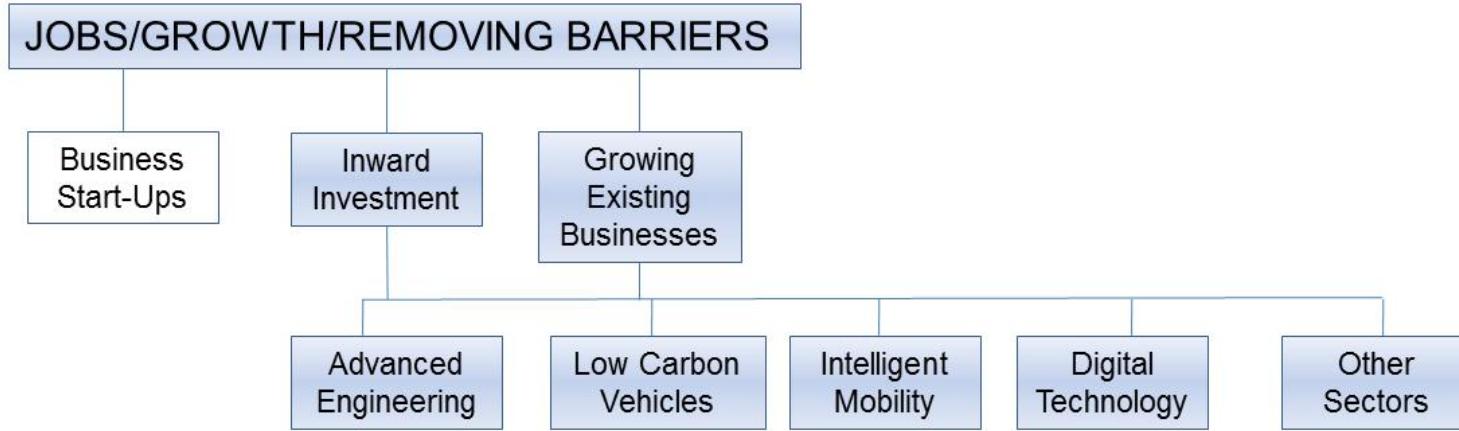
Cllr Alan Farnell – Leader Warwickshire
County Council

Cllr Alan Cockburn - Cabinet Member
Warwickshire County Council

Cllr Lynnette Kelly - Cabinet Member
Coventry City Council

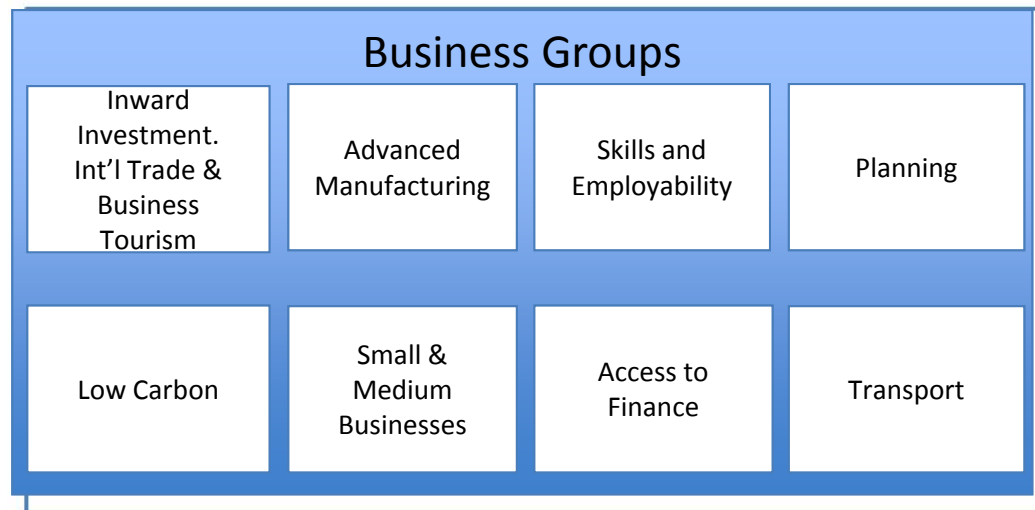
Cllr Craig Humphrey – Leader Rugby
Borough Council

Cllr Les Caborn - Deputy Leader & Cabinet
Member Warwick District Council



Enablers

- Strategic Infrastructure
- FE/HE/Skills
- Inward Investment
- Funding incl. Access to Finance
- Low Carbon Challenge*



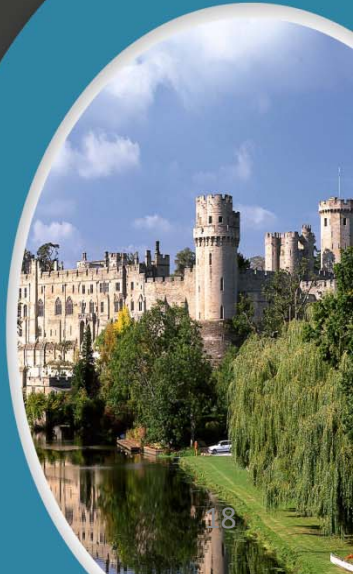
*The Low Carbon Challenge is to provide a high efficiency, low impact 'wrapper' around activity, cementing C&W's leading position nationally



Coventry & Warwickshire
Local Enterprise Partnership

Delivering Priorities with strong LEP structure

- 3 year funding plan with new revenue funding for LEPs nationally
- Clear focus on key schemes and innovation assets significant to the economy such as Gateway, NUCKLE, M40(12), Stoneleigh, Friargate City Centre South and MIRA
- Business Groups revamped and re-energised
- Board members now accountable for Groups with 3 SMART priorities and aligned to Strategy

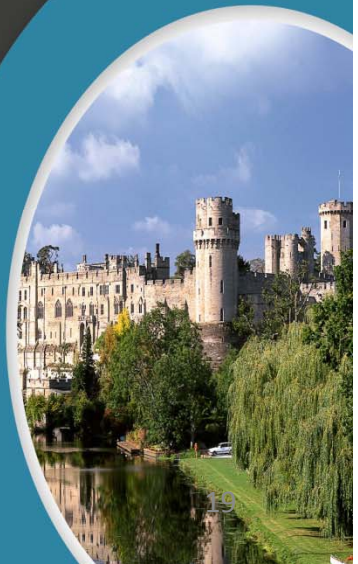




Coventry & Warwickshire
Local Enterprise Partnership

Success so far

- **£24.4 m** Regional Growth Fund Round 3
- Consolidating funding to create **£36.2 m** to deploy across
 - Access to finance
 - Support for business
 - Infrastructure and Major projects
- Administered by a cross sector sub group, reporting into the board.

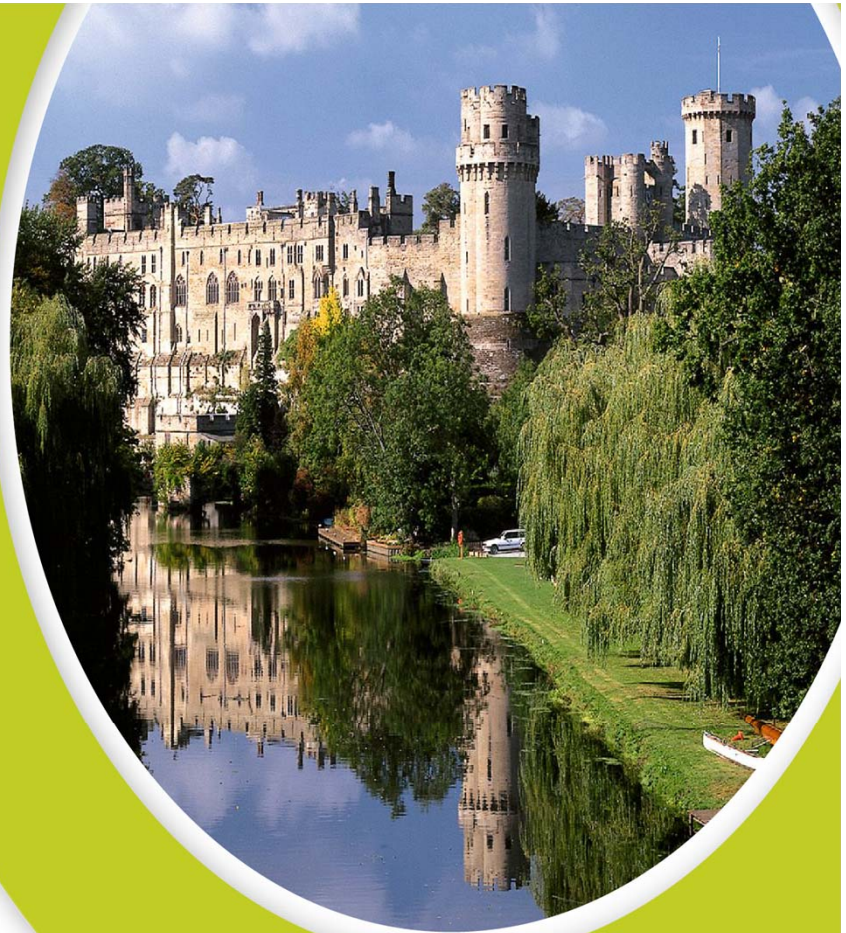




Coventry & Warwickshire
Local Enterprise Partnership

Next Big Challenge : CW City Deal

- What is City Deal
- LEP at the Heart of City Deal

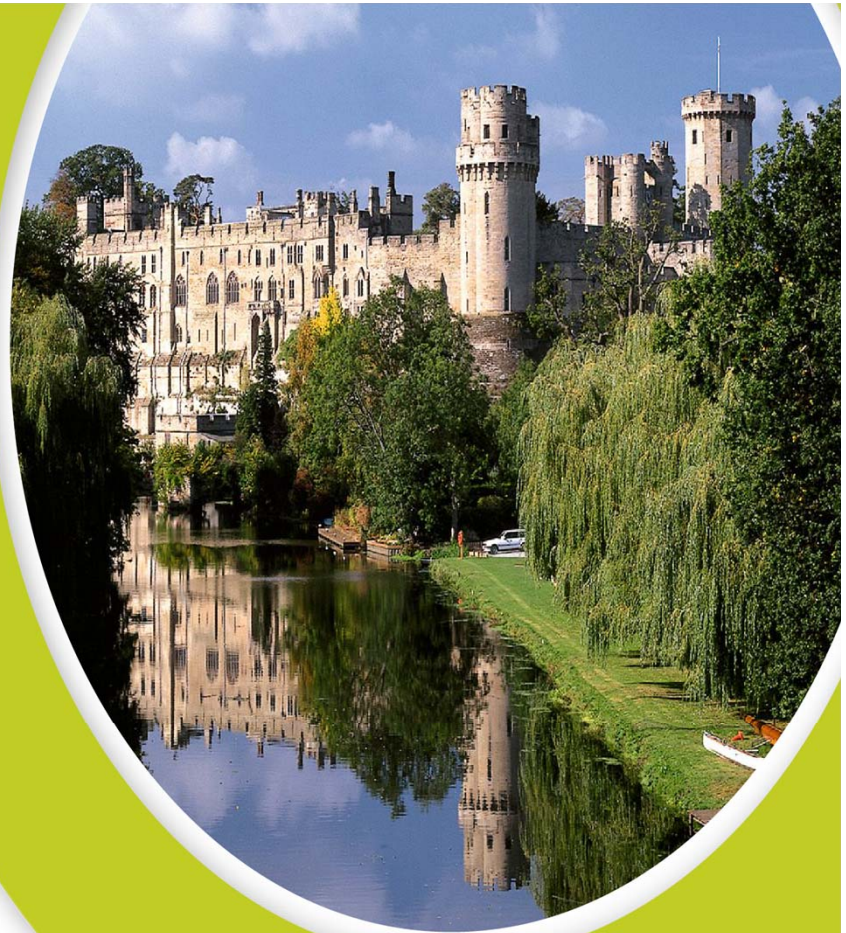




Coventry & Warwickshire
Local Enterprise Partnership

Next Big Challenge : CW City Deal

- “Re-engineering
ENGINEERING”





Coventry & Warwickshire
Local Enterprise Partnership

Summary

- Positive and rapid progress in last 3 months
- Heseltine Review highlighted importance of LEP's
- CWLEP pivotal private sector role in CW City Deal
- Renewed and shared commitment of public and private sector to lift spirits of CW for the future growth of the area.

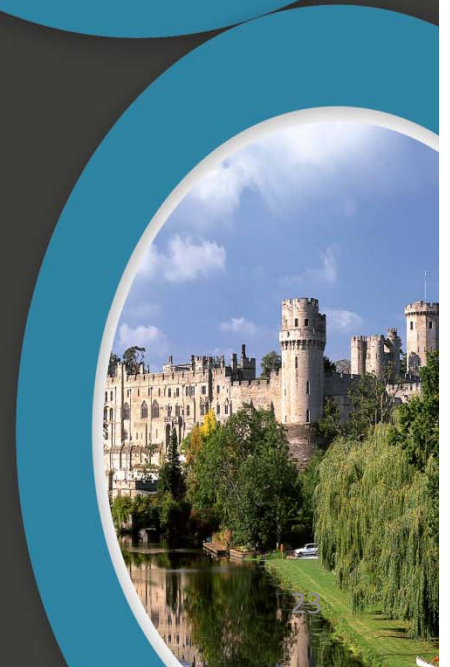




Coventry & Warwickshire
Local Enterprise Partnership

Thank you

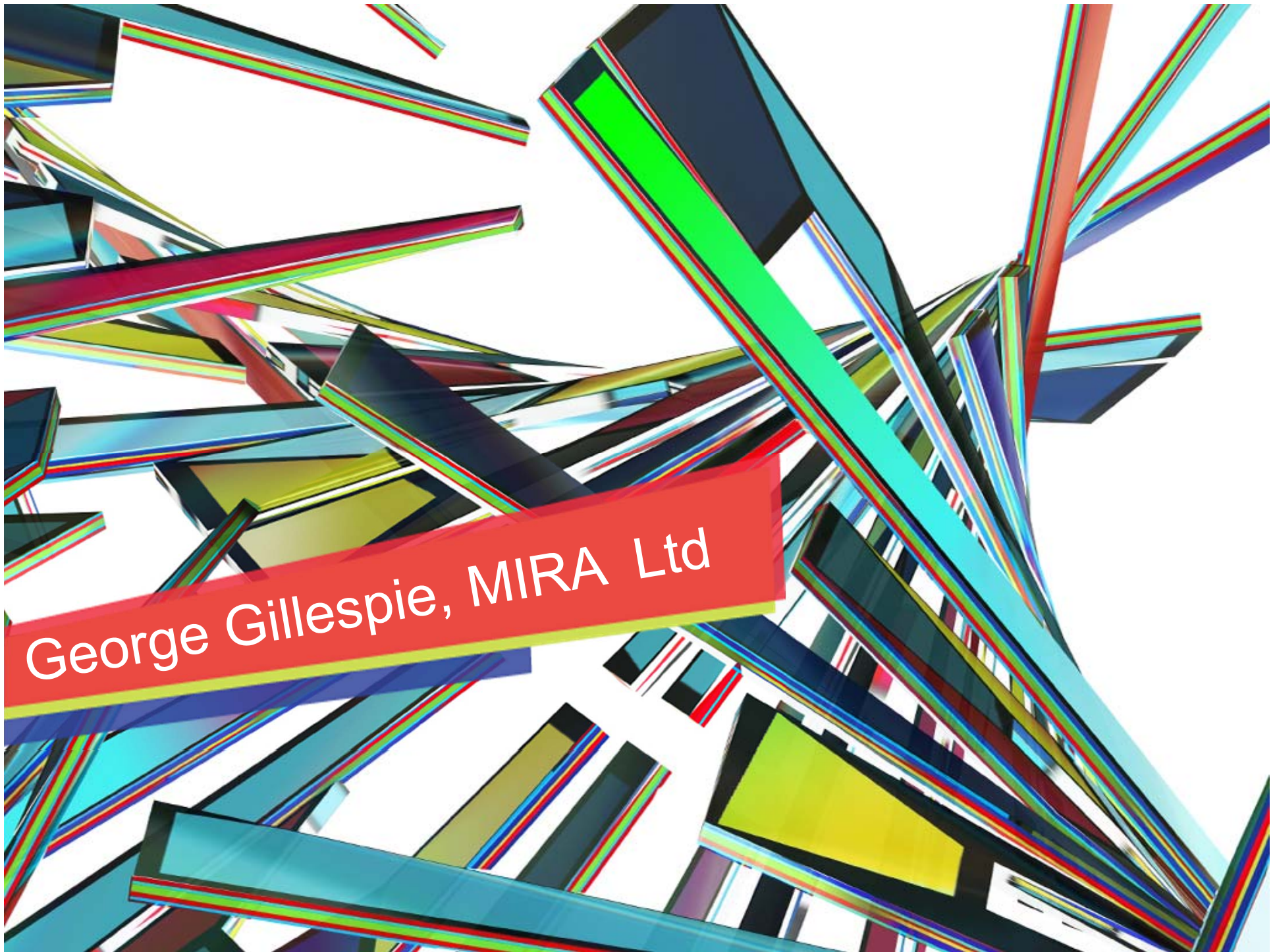
For more information on the Coventry & Warwickshire
LEP Visit: www.cwlep.com





Coventry and Warwickshire

Champions



George Gillespie, MIRA Ltd

MIRA and the Technology Park at MIRA



November 2012

Smarter Thinking.

Heritage and Expertise



■ 65 year old business

- Formed by UK government and industry in 1946
- Limited by guarantee and independent since 1975

■ 550+ staff

- 75% engineers and technicians

■ £45m annual turnover

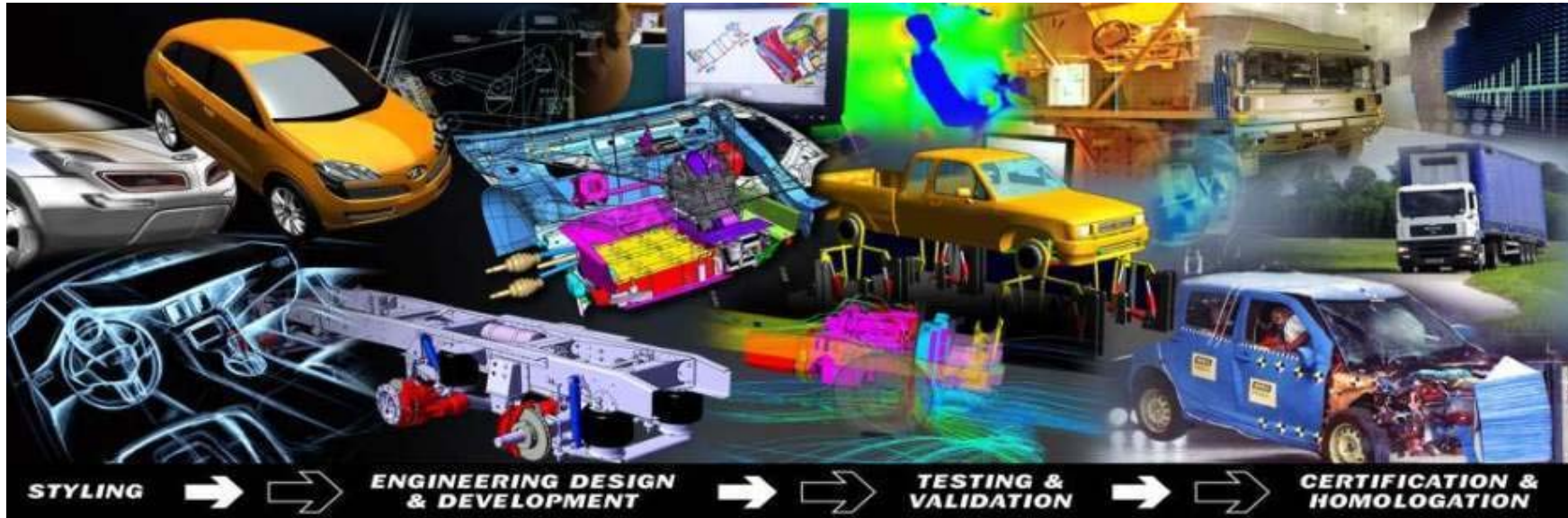
- 50% growth over the past 3 yrs

■ Located on a 825 acre (334Ha) Technology Park in the heart of the UK and complemented by further sites around the world

- 58 mile (95km) proving ground facility and 35+ major facilities
- UK's largest automotive technology park
- Growing international footprint



MIRA delivers world class engineering services to global automotive and transport industries

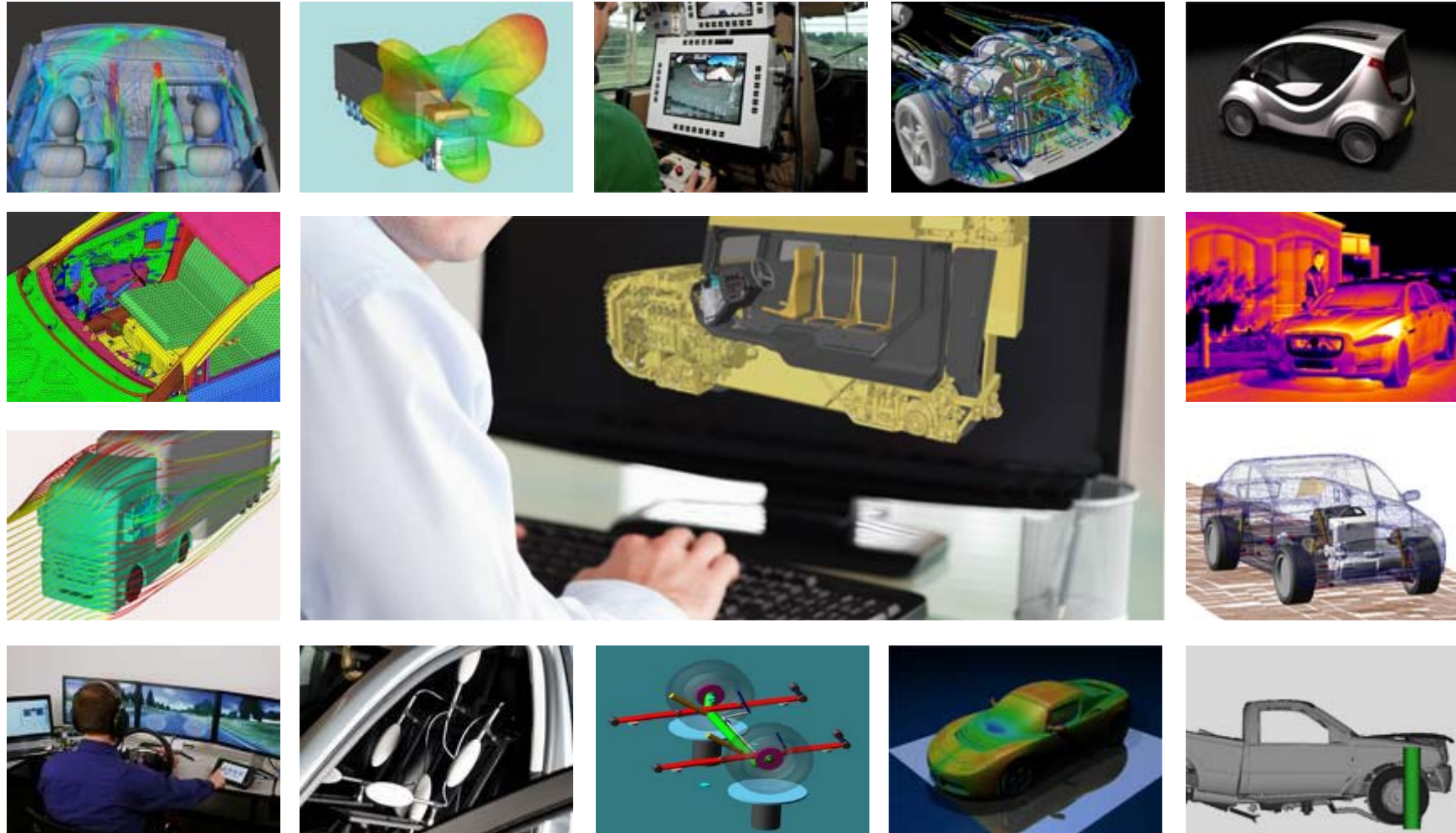


- Full vehicle systems engineering, integration, test, development, validation and certification expertise
- Concept design through to post SOP support
- Strong expertise in BIW and chassis engineering, low carbon technologies, ITS, electronics, control and functional safety

Over 35 Major Facilities



Advanced Tools & Techniques



MIRA's global Vision and Strategy



■ To position MIRA so that “*every journey will be positively influenced by us*” through a 3 pronged strategy:

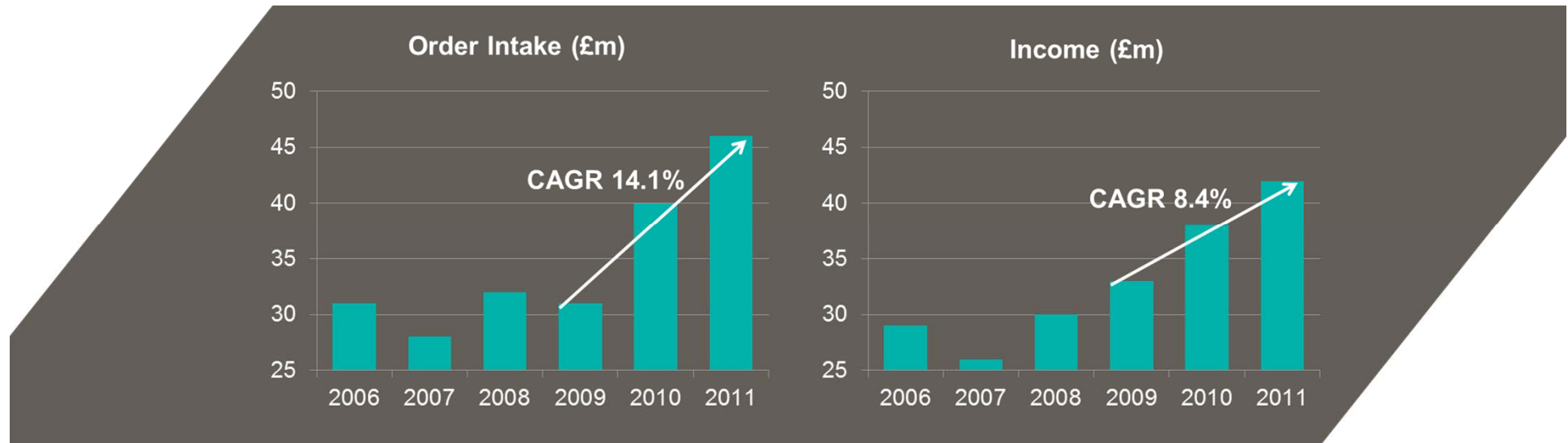
1. Growing MIRA engineering services in advanced automotive and defence vehicle engineering

2. Expanding in key international markets

3. Developing the Technology Park at MIRA as a world-class location focused on the transport sector

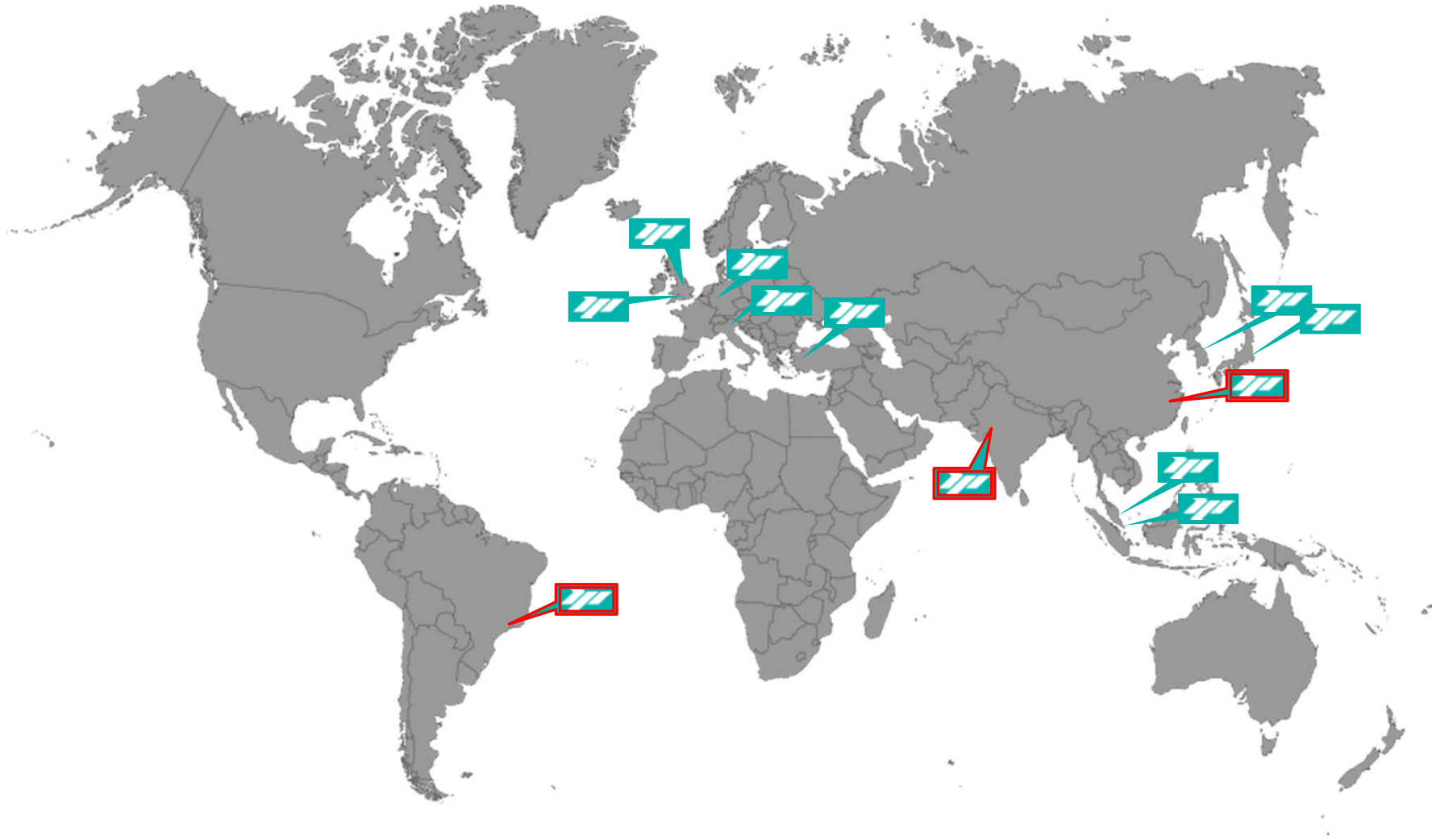


1 - Growing MIRA Engineering Services



- Building on strong growth since 2009 MIRA has a 5 year plan in place to grow the core Engineering and Testing Services business by 120% to circa £100m pa
- Technology development is focused in growth areas such as advanced military autonomous vehicles, Low Carbon Vehicles and Intelligent Mobility solutions.
- Geographical expansion focused in Brasil, India, China and Turkey will grow the international business to 45%

MIRA is developing its international footprint as part of its growth strategy



Recent Technology Park Tenants (over last 10 years)



- Over the past decade the Technology Park at MIRA has played host to all of the following businesses:



Comprehensive R&D Facilities and Engineering Resources Available to Support your Team



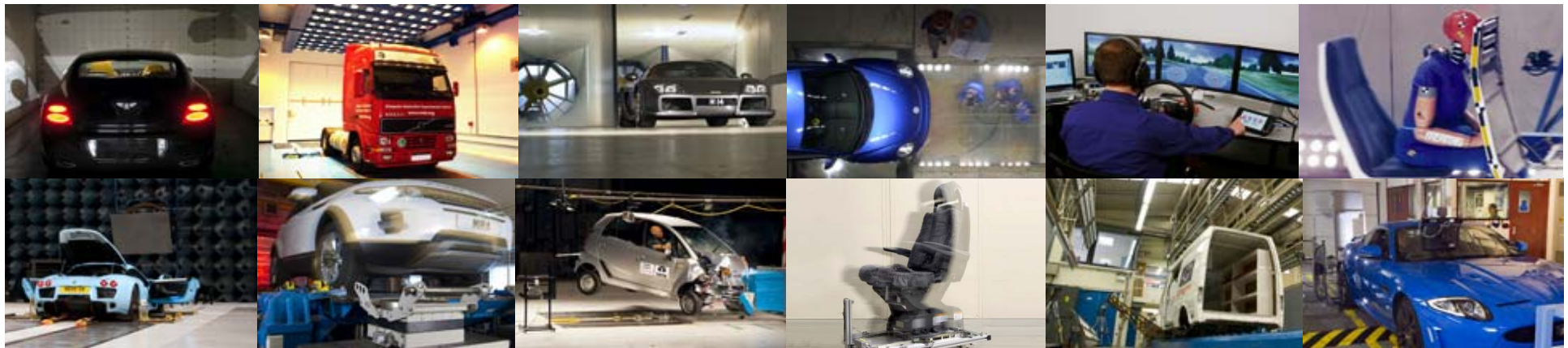
- The Technology Park benefits from the comprehensive MIRA proving ground with over 58 miles of test tracks including:
 - Wet and dry handling, Steering, ABS and Traction control facilities
 - Durability (Europe, US, ME, China, India), Performance, Corrosion
 - Test hills, Transient Events, Noise tracks and 4x4 Off-Road facilities
 - Europe's most comprehensive ITS proving ground



Comprehensive R&D Facilities and Engineering Resources Available to Support your Team



- Additionally MIRA provides special access to the UK's most comprehensive R&D suite of laboratories with over 35 major facilities including:
 - Climatic and aerodynamic wind tunnels
 - Europe's most comprehensive suite of EMC laboratories
 - Comprehensive safety labs
 - Dynamics and acoustic labs including a simulator
 - Powertrain and emissions, EV drive battery labs



Immediate and priority access to a world class multi-disciplinary vehicle engineering team



The Technology Park at MIRA





Vision.

“To create a world class centre of excellence in transport technology and an outstanding working environment.”

The Technology Park at MIRA offers a unique proposition:

- **Builds on an existing globally recognised and respected centre of excellence in transport sector R&D**
- **Creates a strong UK inward investment opportunity, focused on overseas businesses seeking to establish a European R&D operation**
- **Delivers bespoke facilities to end user requirements providing access to the existing test track and laboratory facilities**
- **At 1.75M sq ft of R&D space, MIRA will become Europe’s largest transport sector R&D cluster**
- **Aligned with government priorities, delivering 2000 high tech jobs, leveraging £300M of private sector funding**
- **Builds on a proven business model**

Government recognition and endorsement



■ April 2011 - Deputy Prime Minister Nick Clegg is given a presentation on MIRA

“This is all very impressive. It is great to see a company coming forward with plans that can not only spearhead an industry but also bring together a strong regional business community. MIRA’s plans would make a big difference to jobs in the area and help Britain’s aspirations to be at the forefront of Technology and Innovation Centres”



Government Support – Local and National



Hinckley & Bosworth
Borough Council

A Borough to be proud of



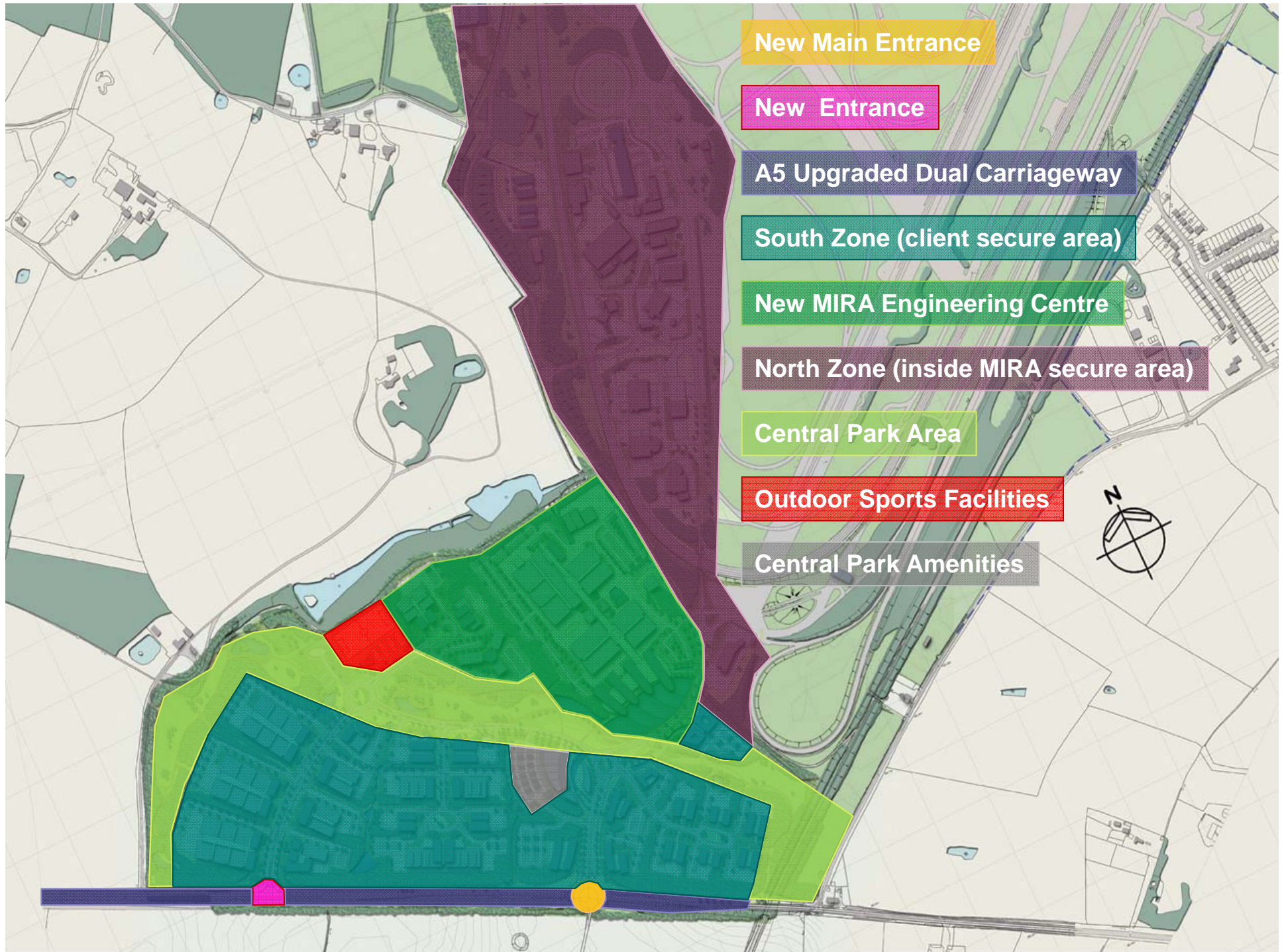
- Worked in partnership with Hinckley & Bosworth BC to prepare a £19.4M Regional Growth Fund bid to bring forward supporting local infrastructure upgrades



- MIRA Technology Park awarded UK Enterprise Zone status



- Unanimous planning approval from both Hinckley & Bosworth and North Warwickshire Planning Committees



New Main Entrance

New Entrance

A5 Upgraded Dual Carriageway

South Zone (client secure area)

New MIRA Engineering Centre

North Zone (inside MIRA secure area)

Central Park Area

Outdoor Sports Facilities

Central Park Amenities



Development Delivery



■ Timeline:

- 2011:** Masterplan completed, planning consent granted, EZ designation awarded, RGF grant for public infrastructure, global marketing programme initiated
- 2012:** First occupiers conceptual designs & commercial agreements, detail designs in progress and local development order in place. Principal investors on board
- 2013:** Initiate key off-site infrastructure up gradation, phase 1 of on-site infrastructure, start of construction for first occupier buildings
- 2014:** First occupiers take possession, completion of phase 1 on-site infrastructure, off-site infrastructure completed
- 2021:** Whole development completed





MIRA
The Control Centre
was opened by the
Rt Hon Dr Vince Cable MP
Secretary of State for Business,
Innovation and Skills
on
5th November 2012

UK Enterprise Zone.



Recent Announcements (5th November 2012)



Bosch Engineering



ASHOK LEYLAND

LOCKHEED MARTIN









Smarter Thinking.



Coventry and Warwickshire

Champions



Duncan Eldridge, NP Aerospace

NP Aerospace

**The World's Leading Body and Vehicle Armour
Technologies**

Coventry and Warwickshire Champions

21st November 2012



Replacing Metals with Advanced Composites

NP Aerospace - A 100 Year Heritage in Coventry

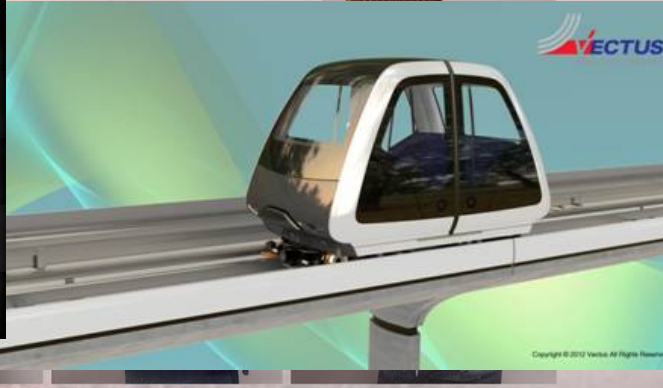
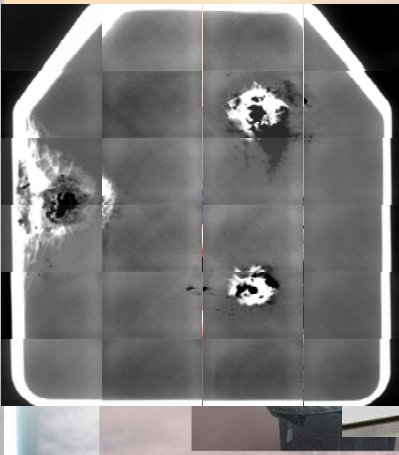
Courtaulds developed the World's first composite materials in 1926



The Advanced Materials business of Courtaulds became NP Aerospace
We are now the world leaders in Ballistic Protection Systems



Personal Protection, Vehicle Protection and Advanced Composites



Genesis of the Mastiff Fleet in Coventry and Warwickshire



Mastiff, Ridgback, Wolfhound and Support Vehicles: Over 700 vehicles Armoured and Integrated in Coventry



The People of Coventry and Warwickshire have Protected the Soldiers who have Protected Us



We have World Leading Technologies – primarily for UK Now we are driving to win business overseas.

Our Role in Coventry

- to expand through export to friendly nations
- to continue to invest in technology
- to continue to support local, leading suppliers as they have supported us
- to continue to draw graduates from Coventry University





Coventry and Warwickshire

Champions

The background is a complex, abstract composition of numerous overlapping, semi-transparent, 3D-style geometric shapes. These shapes are primarily rectangular and triangular, rendered in a variety of colors including shades of cyan, blue, green, yellow, red, and purple. They are arranged in a way that creates a sense of depth and movement, with some shapes appearing to recede into the background while others come forward. A prominent feature is a wide, solid red banner that cuts across the middle of the image, slightly angled. The overall effect is a vibrant, multi-layered digital artwork.

Sarah Perry

Coventry and Warwickshire Champions

Advent Communications

Alumet

City College Coventry

Coventry and Warwickshire

Chamber of Commerce

Coventry and Warwickshire

First

Coventry Cathedral

Coventry City Council

Coventry Telegraph

Coventry University

Creating Synergy

CSWP - The Careers

Guidance Company

Deeley Properties Ltd

De Marco Solicitors

Federation of Small Business

Free Radio

Harris Sign Group Ltd

Harrison Beale & Owen Ltd

Henley College Coventry



Coventry and Warwickshire Champions

Jaguar Land Rover

Medwell Creations Ltd

Medwell Hyde Ltd

Meggitt Aircraft Braking

Systems

Orbit Heart of England

Peugeot Citroen Automobiles

UK Ltd

Progressive Educational Tools

PWC

Ricoh Arena

Royal Shakespeare Company

Shortland Penn and Moore

State Bank of India

Stratford Business Forum

University of Warwick

Vagdia and Holmes

Warwickshire County Council

Whitefriars Housing Group





Coventry and Warwickshire

Champions



Coventry is one of England's greatest cities...

The eleventh largest in the UK with a population of over three hundred thousand people, it is an ancient city with its roots in the Bronze Age. However, it only takes a short amount of time to appreciate that any story of Coventry is in fact a story of Coventry and Warwickshire. The eleventh largest in the UK with a population of over three hundred thousand people, it is an ancient city with its roots in the Bronze Age. However, it only takes a short amount of time to appreciate that any story of Coventry is in fact a story of Coventry and Warwickshire. The eleventh largest in the UK with a population of over three hundred thousand people, it is an ancient city with its roots in the Bronze Age. However, it only takes a short amount of time to appreciate that any story of Coventry is in fact a story of Coventry and Warwickshire. However, it only takes a short amount of time to appreciate that any story of Coventry is in fact a story of Coventry and Warwickshire. The eleventh largest in the UK with a population of over three hundred thousand people, it is an ancient city with its roots in the Bronze Age. However, it only takes a

www.coventry-warwickshire.co.uk



Coventry and Warwickshire Champions

Coventry Cathedral

Deeley Properties Ltd

Federation of Small Business

Harris Sign Group Ltd

Jaguar Land Rover

Medwell Creations Ltd

Medwell Hyde Ltd

Peugeot Citroen Automobiles

UK Ltd

PWC

Royal Shakespeare Company

State Bank of India

Vagdia and Holmes

Whitefriars Housing Group



Coventry and Warwickshire Champions

23rd January 2013

20th March 2013

22nd May 2013

7.45 – 9.30am

www.coventry-warwickshire.co.uk





Coventry and Warwickshire

Champions