

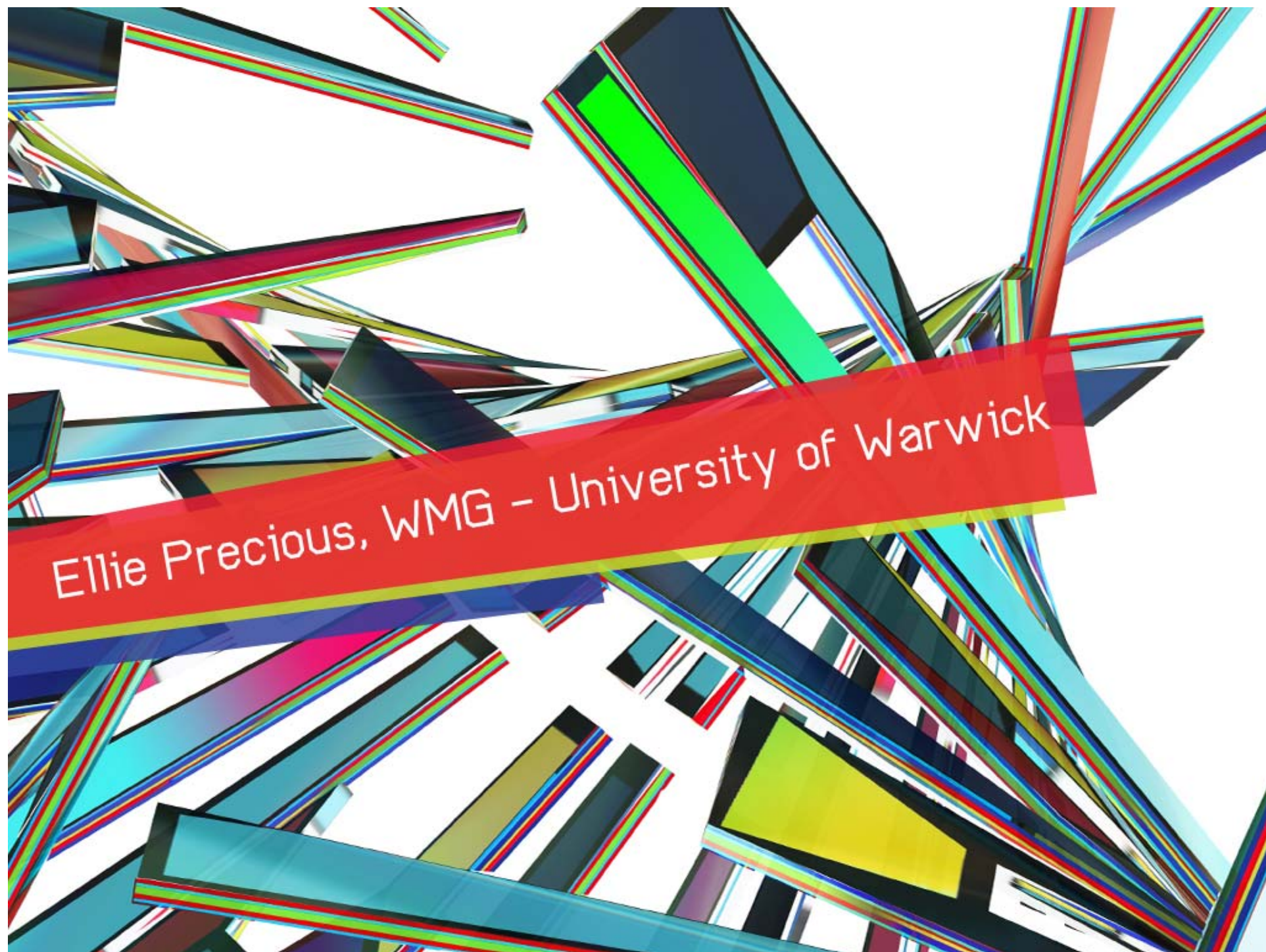




An abstract geometric artwork featuring a dense, chaotic arrangement of 3D rectangular bars in various colors including blue, green, red, yellow, and purple. The bars are oriented in different directions, creating a sense of depth and movement. A prominent red banner with white text is overlaid diagonally across the center of the composition.

Darren Parkin, Coventry Telegraph





Ellie Precious, WMG - University of Warwick



# International Institute for Product and Service Innovation (IIPSI)







# Introduction



- Launch September 2012
- **£12m** building and programme to support innovation and **GROWTH** in small to medium sized enterprises (SMEs) in the West Midlands

*Three technology themes:*

**Digital Innovation**

**Polymer Innovation**

**Experience Led Innovation**

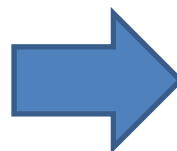
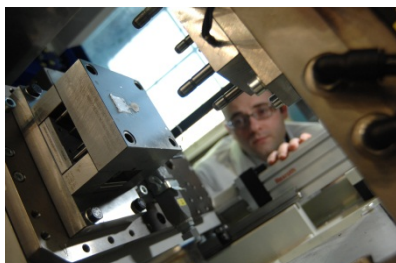
- Demonstrators will be on show to inspire and illustrate technology innovations available to SMEs
- Business support programmes from a dedicated team





# Expertise and Services Provided

investing  
in **your** future  
European Regional Development Fund  
European Union



- Workshops
- Technology Demonstrations
- Access to facilities
- Consultancy /in-company projects
- Student and Graduate Projects
- Research & Development
- Funding Applications







# SME Projects



## *Who is eligible for support?*

- Must be a West Midlands based organisation
- Must be an SME
  - **Fewer than 250 employees**
  - **Less than €50m turnover**
  - **No more than 25% owned by a non-SME**

## *What type of project qualifies?*

- Project must be aimed at achieving business growth
  - New jobs created, jobs safeguarded, new business created
- We agree together on the target outputs at the outset
- Must agree to provide documentation and verification of impact













## Contact us

investing  
in **your** future  
European Regional Development Fund  
European Union



.....

If this is interesting to you as a business or you have a product or service idea you are developing, please contact:

[wmgsme@warwick.ac.uk](mailto:wmgsme@warwick.ac.uk)

0247 6575 594







# Coventry and Warwickshire Champions

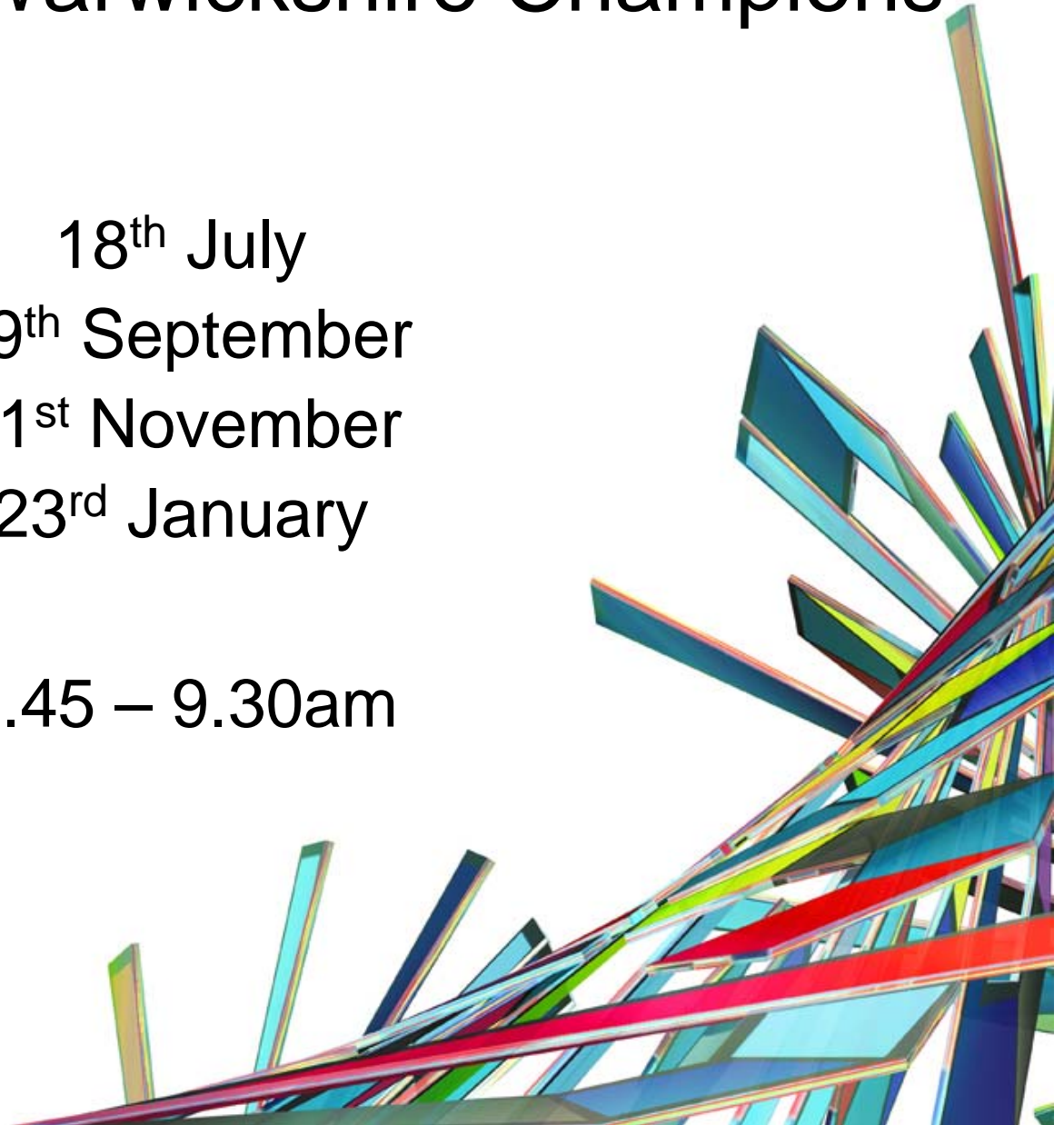
18<sup>th</sup> July

19<sup>th</sup> September

21<sup>st</sup> November

23<sup>rd</sup> January

7.45 – 9.30am







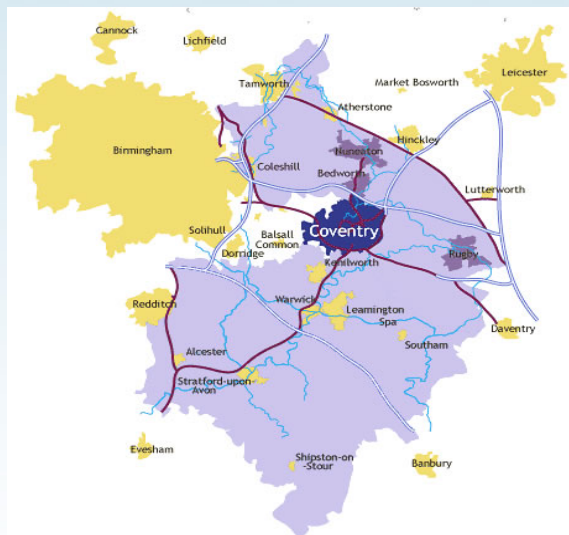
Coventry and Warwickshire

Champions

An abstract graphic featuring a complex arrangement of overlapping, translucent, geometric shapes in various colors including teal, blue, green, yellow, and red. The shapes are oriented in different directions, creating a sense of depth and movement. A prominent red banner with a slight gradient is positioned diagonally across the lower right portion of the image. The banner contains white text that reads "Ken Sloan, University of Warwick".

Ken Sloan, University of Warwick





# vision2015

A STRATEGY FOR WARWICK



WARWICK

back to  
School



University of Warwick  
Science Park

**CATAPULT**  
High Value Manufacturing

WARWICK





Through our  
international  
and national  
partnerships



**MONASH**  
University



THE UNIVERSITY OF  
WARWICK

**TEACHING  
SHAKESPEARE**

TRANSFORM  
YOUR CLASSROOM  
EXPERIENCE OF  
SHAKESPEARE



WARWICK



Warwick  
Medical School



WVG

Innovative Solutions

WARWICK



VS.



WARWICK









John Holmes, Oxalis Planning

Martin Yardley, Coventry City Council



# Sympathy Vote



# Coventry & Warwickshire

Local Enterprise Partnership

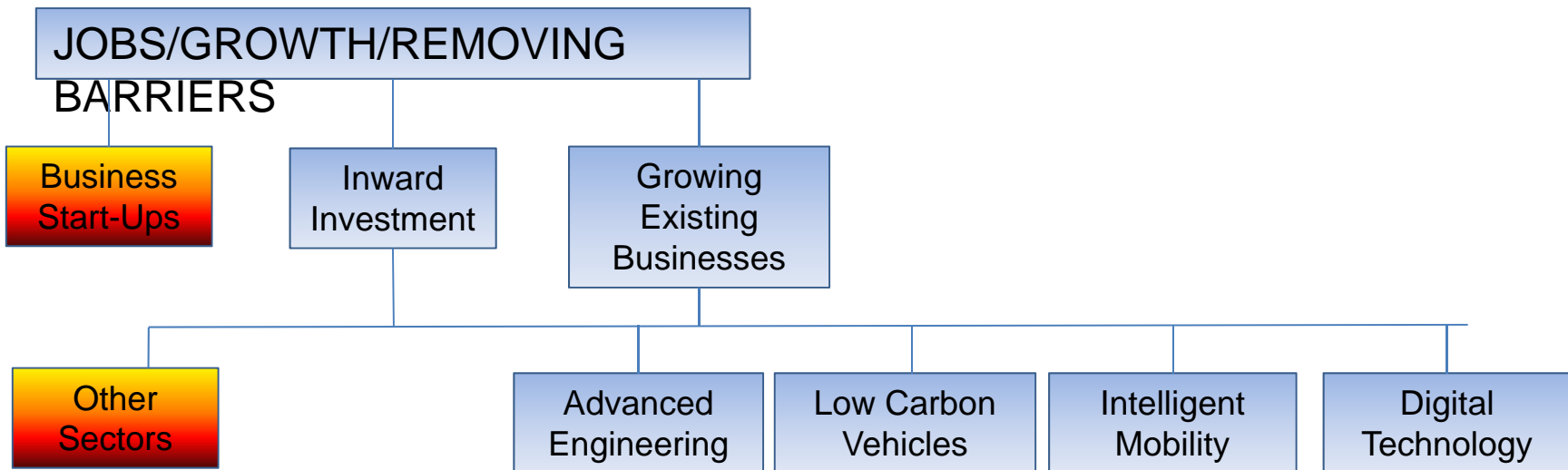




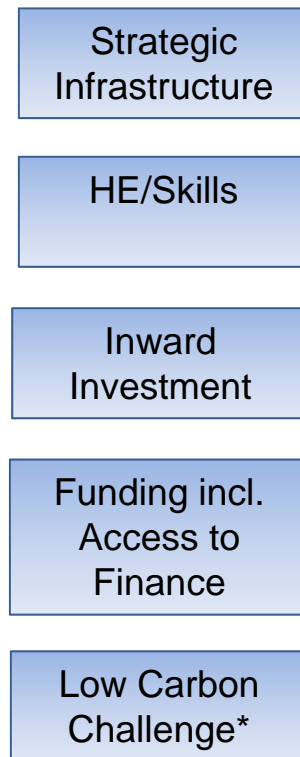


## CWLEP Purpose

- **Local enterprise partnerships will see business and civic leaders work together to drive sustainable economic growth and create the conditions for private sector job growth in their communities. This is a real power shift away from central Government and quangos and towards local communities and the local businesses who really understand the barriers to growth in their areas.**



### Enablers



### WORK PROGRAMME

- Focusing on economic growth (versus jobs growth)
- Role of Groups.....?

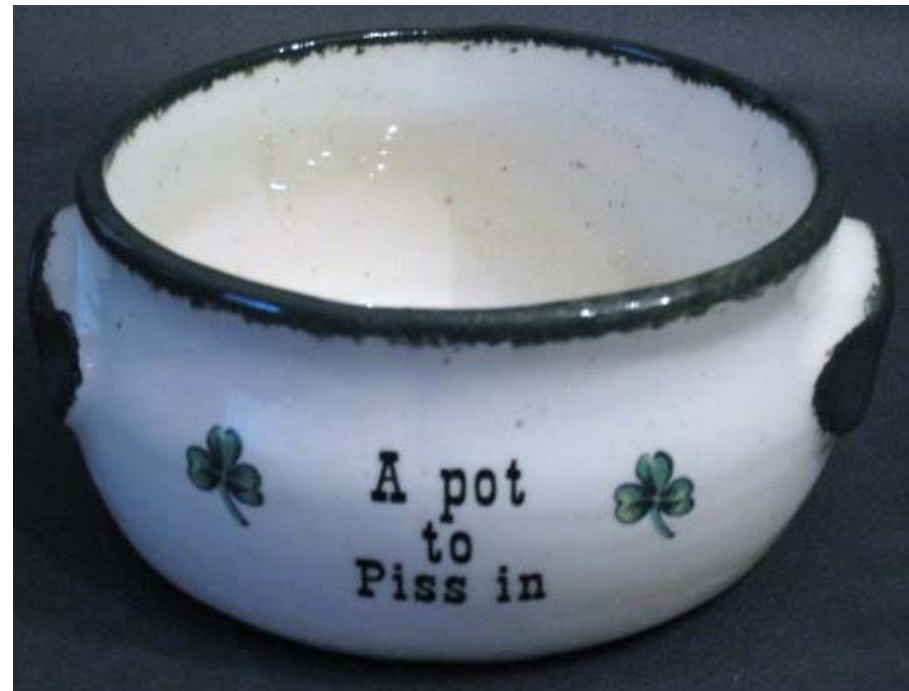
\*The Low Carbon Challenge is to provide a high efficiency, low impact 'wrapper' around activity, cementing C&W's leading position nationally



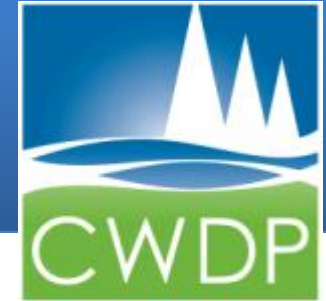


# Finances and what has gone before

- RDA
- LEP Funding
- RDF 1,2 and 3
- Growing Places



# Just between you and me

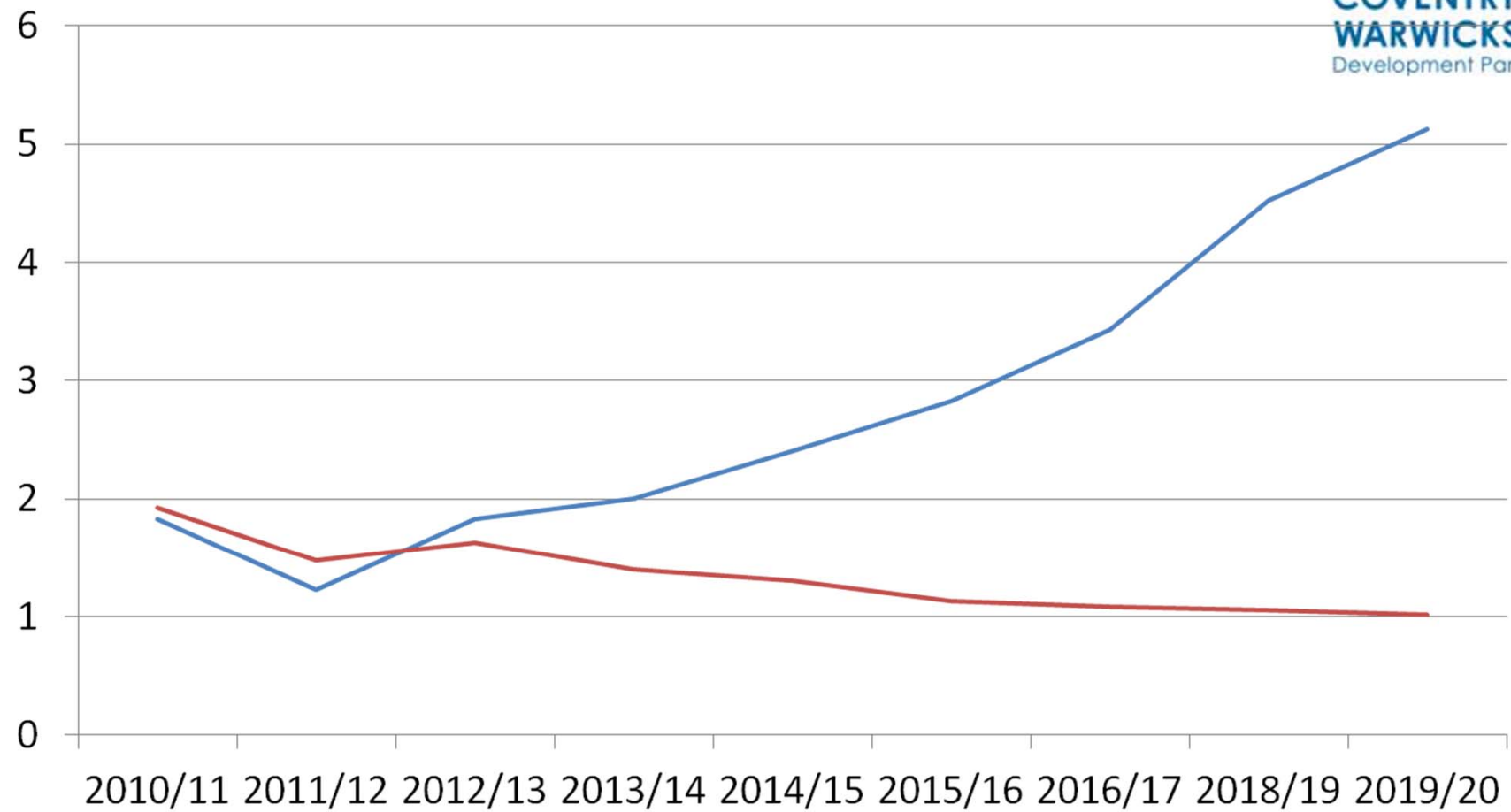


and  
IIRE  
ership

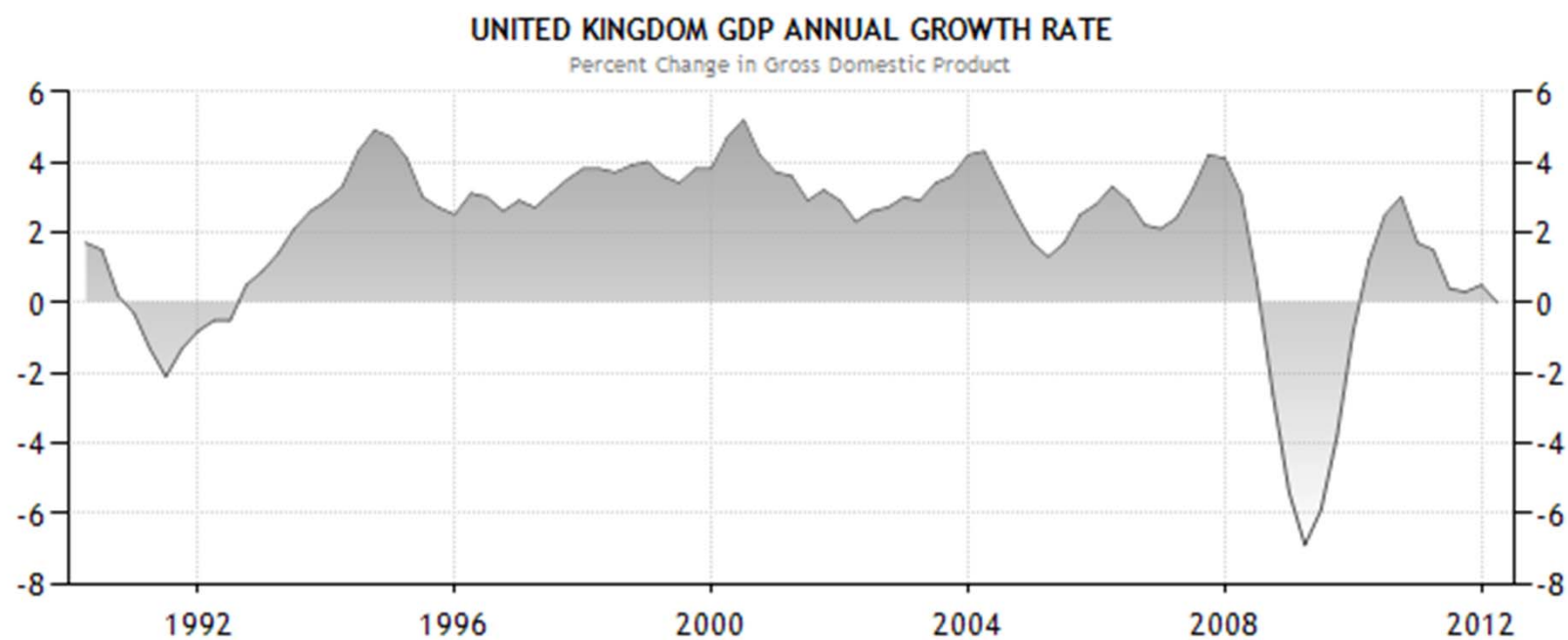
- Funding
- Powers
- Authority
- Entity
- Workforce



# A FUNDING SHORTFALL





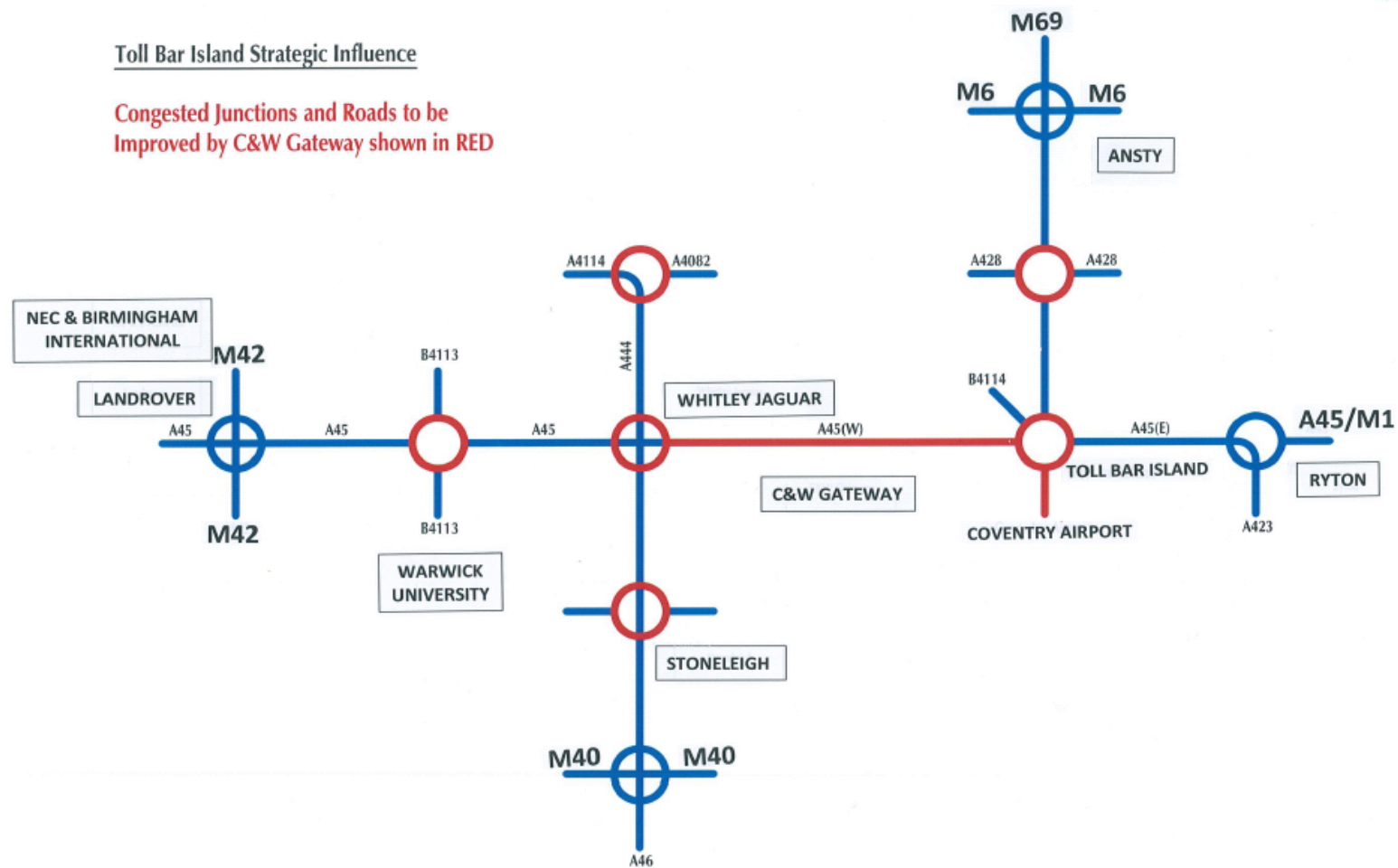


SOURCE: [WWW.TRADINGECONOMICS.COM](http://WWW.TRADINGECONOMICS.COM) | UK OFFICE FOR NATIONAL STATISTICS



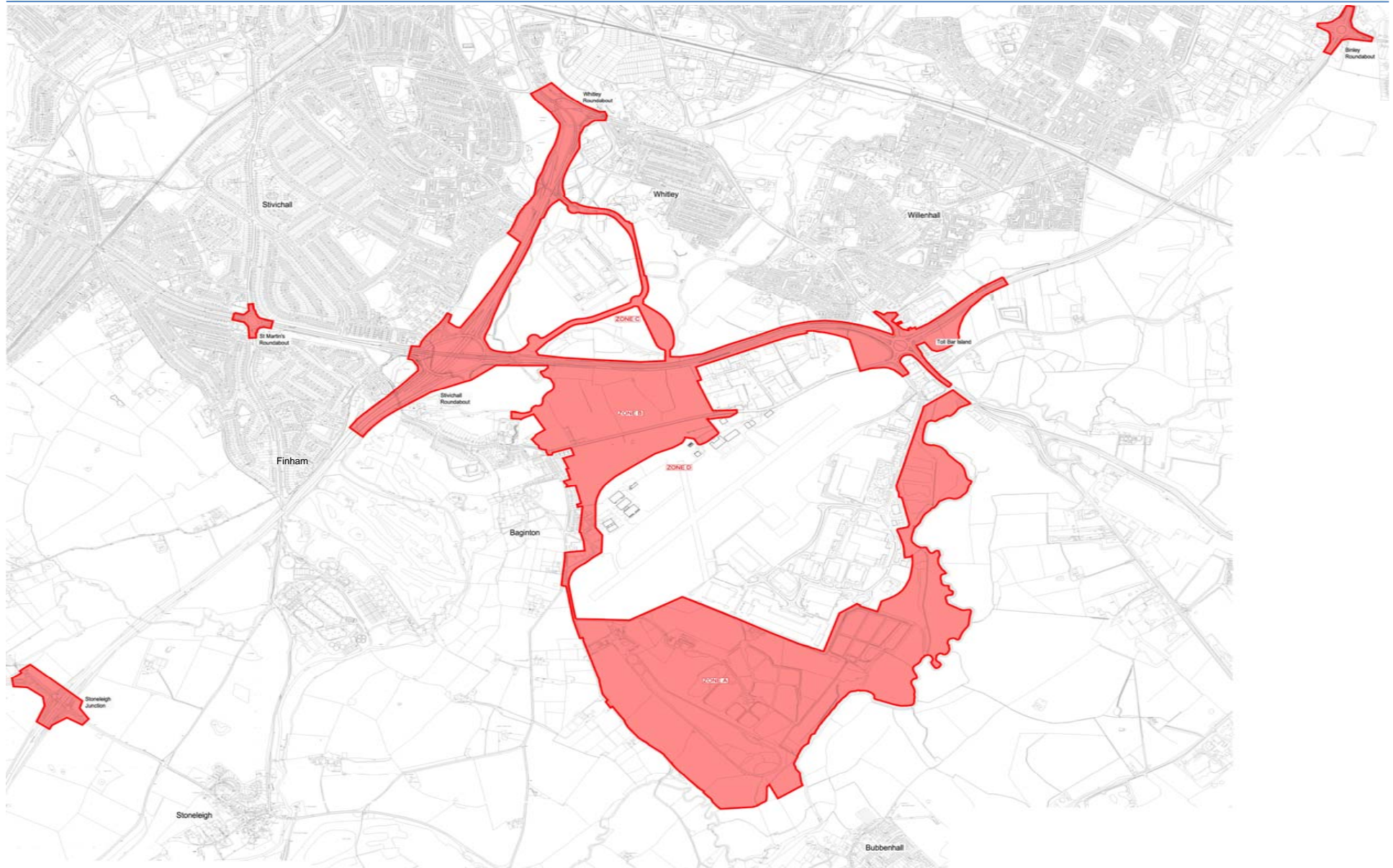
### Toll Bar Island Strategic Influence

**Congested Junctions and Roads to be Improved by C&W Gateway shown in RED**





# The Site



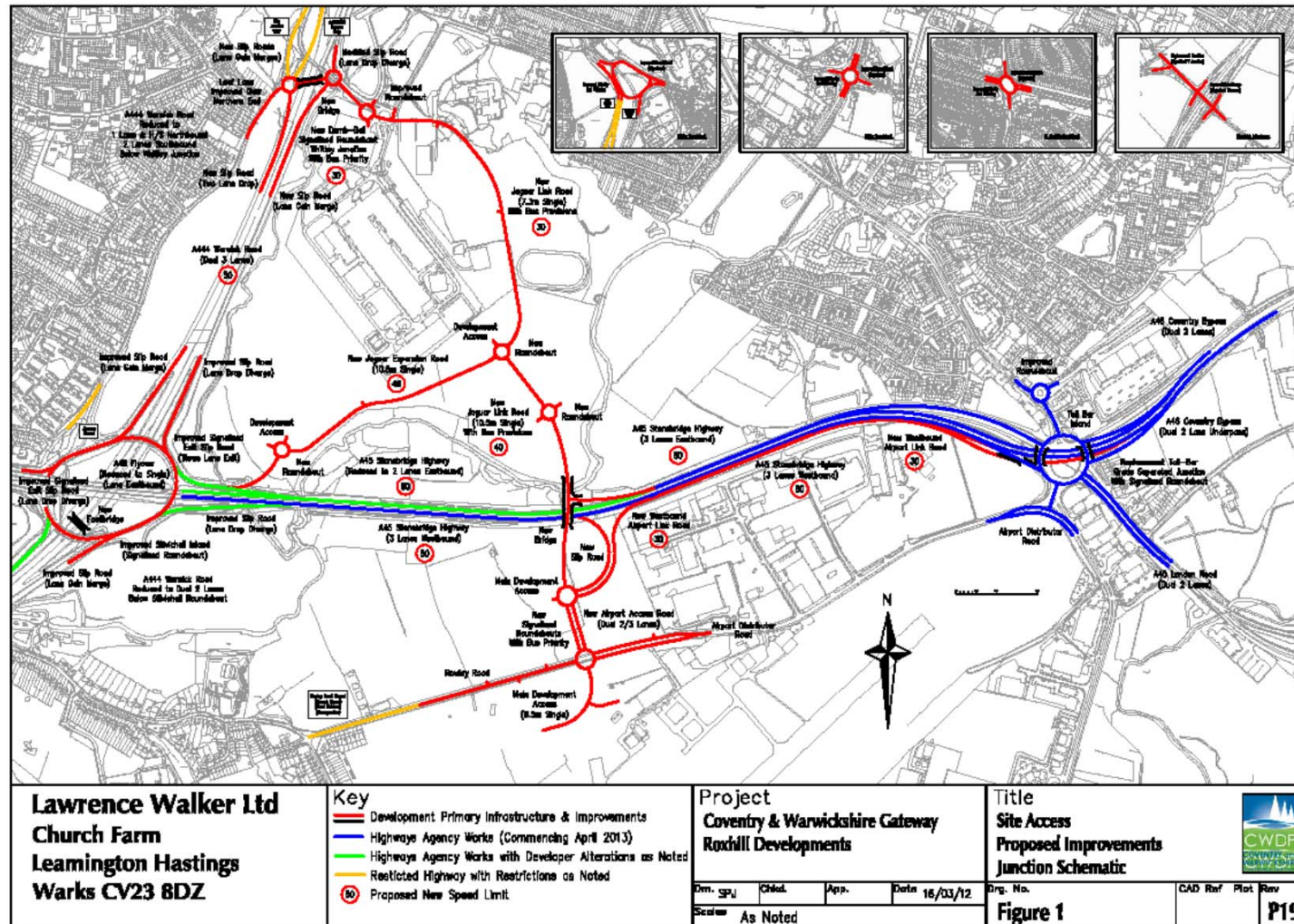
# Key Highlights – Gateway Development



- Developing a true Public/Private solution for the A45/A46 congestion solution.
- Creation of 14,000 jobs.
- Attracting Private Sector investment of £250million.
- 300 acres comprising a Technology Hub, Business and Distribution Park and airport development and infrastructure.
- Fundamental to CW LEP strategy and local plans.

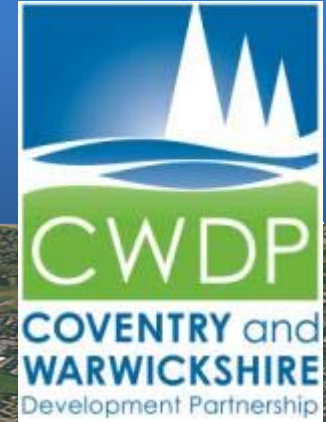


# Highway Infrastructure





# Potential Employment







# COVENTRY AND WARWICKSHIRE GATEWAY SCHEME

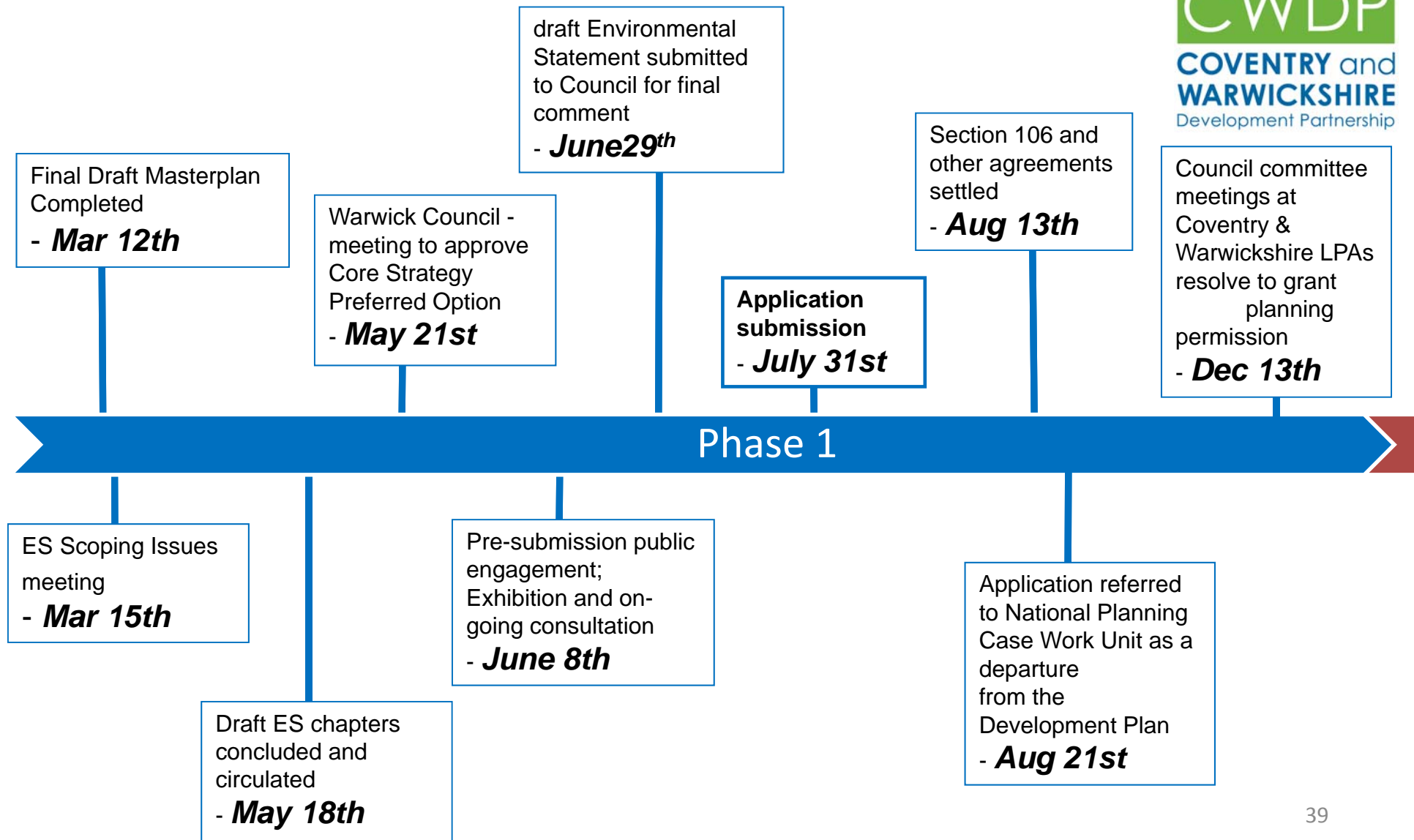
|   |  |  |   |   |   |
|---|--|--|---|---|---|
| <div>Bill Hunt<br/>Deputy Chief Executive<br/>WDC<br/>01926 456 014</div>   | <div>Martin Yardley<br/>Director of City Services and Development<br/>CCC<br/>024 7683 1200</div>  | <div>Monica Fogarty<br/>Strategic Director for Communities<br/>WCC<br/>01926 412 514</div>                                       | <div>David Keir<br/>Roxhill Developments<br/>01788 422 200</div>  |   |   |
| <div>Public Protection</div>  | <div>Highways</div>  | <div>Planning</div>  | <div>Conservation/Archaeology</div>   | <div>Ecology</div>  | <div>Drainage</div>   |
| <div>Richard Hall<br/>Head of Environmental Services<br/>WDC<br/>01926 456 700<br/>richard.hall@warwickdc.gov.uk</div>          | <div>Colin Knight<br/>Assistant Director (Planning, Transport &amp; Highways) CCC<br/>024 7683 2322<br/>colin.knight@coventry.gov.uk</div> | <div>Tracy Darke<br/>Group Manager Planning &amp; Building Control CCC, 024 7683 1240<br/>tracy.darke@coventry.gov.uk</div>      | <div>Chris Patrick<br/>CCC<br/>024 7683 1271<br/>christopher.patrick@coventry.gov.uk</div>                                      | <div>Kate Hollins<br/>FPCR<br/>01509 672 772<br/>kate.hollins@fpcr.co.uk</div>                    | <div>Roger Jewsbury<br/>Head of Community Protection<br/>WDC<br/>01926 456320<br/>roger.jewsbury@warwickdc.gov.uk</div> |
| <div>Sara Roach<br/>Assistant Director (Public Safety &amp; Housing) CCC<br/>024 7683 3402<br/>sara.roach@coventry.gov.uk</div> | <div>Sunil Budhdeo<br/>Team Manager (UTMC) CCC<br/>024 7683 4063<br/>sunil.budhdeo@coventry.gov.uk</div>                                   | <div>Claire Tucker<br/>CCC. 024 7683 1224<br/>claire.tucker@coventry.gov.uk</div>  | <div>Anna Stocks<br/>Planning Archaeologist<br/>WCC<br/>01926 412734<br/>annastocks@warwickshire.gov.uk</div>                   | <div>Lois Browne<br/>Ecologist<br/>WCC<br/>01926 418 060<br/>loisbrowne@warwickshire.gov.uk</div> | <div>Peter Bones<br/>Flood Risk Manager<br/>WCC<br/>01926 412 826<br/>petebones@warwickshire.gov.uk</div>               |
| <div>Rachel Field<br/>Environmental Protection Manager<br/>CCC, 024 7683 1858<br/>rachel.field@coventry.gov.uk</div>            | <div>Karen Seager<br/>Group Highways Manager CCC<br/>024 7683 4014<br/>karen.seager@coventry.gov.uk</div>                                  | <div>Geoff Horsman<br/>Principal Planning Officer CCC<br/>024 7683 1226<br/>geoff.horsman@coventry.gov.uk</div>                  | <div>Mark Ryder<br/>Head of Localities &amp; Community Safety<br/>WCC<br/>01926 412 811<br/>markryder@warwickshire.gov.uk</div> | <div>David Lowe - ???<br/>WCC<br/>01926 41<br/>davidlowe@warwickshire.gov.uk</div>                | <div>Neil Cowper<br/>Highways Technical Manager<br/>CCC 024 7683 2746<br/>neil.cowper@coventry.gov.uk</div>             |
| <div>Michael Jenkins<br/>Technical Officer<br/>WDC<br/>01926 456 724<br/>michael.jenkins@warwickdc.gov.uk</div>                 | <div>Paul Boulton<br/>Group Manager Traffic &amp; Transportation<br/>CCC 024 7683 2030<br/>paul.boulton@coventry.gov.uk</div>              | <div>Alex Millar<br/>CCC. 024 7683 1277<br/>alexander.millar@coventry.gov.uk</div>   | <div>Jim Newton<br/>CCC 024 7683 1187<br/>jim.newton@coventry.gov.uk</div>  |   | <div>Guy Dixon<br/>Lambert Smith Hampton<br/>Director<br/>0121 237 2357<br/>gdixon@lsh.co.uk</div>                      |
| <div>Mark Arnold<br/>Vanguardia Senior Acoustic Consultant<br/>01883 718 690<br/>mark.arnold@vanguardiaconsulting.co.uk</div>   | <div>Peter Howarth<br/>Traffic Advice &amp; Design CCC<br/>024 7683 2038<br/>peter.howarth@coventry.gov.uk</div>                           | <div>Jasbir Kaur<br/>Strategic Planning &amp; Development<br/>Manager WCC, 01926 412734<br/>jasbirkaur@warwickshire.gov.uk</div> | <div>Dave Barber<br/>Policy Manager – WDC, 01926 456065<br/>dave.barber@warwickdc.gov.uk</div>                                  |   |   |
| <div>Peter Goddard<br/>Goddard &amp; Sons<br/>01933 682 230<br/>pidg@talk21.com</div>   | <div>Louise Wall - Head of Sustainable<br/>Communities, WCC<br/>01926 412 422<br/>louise.wall@warwickshire.gov.uk</div>                    | <div>Tracy Darke<br/>Head of Development Services, WDC<br/>01926 456016</div>  | <div>Steve Weaver – CGMS Cosnulting<br/>01242 259 291<br/>steven.weaver@cgms.co.uk</div>  |   |   |
| <div>Darren Bench<br/>Waterman<br/>0121 212 700<br/>d.m.bench@waterman-group.co.uk</div>  | <div>Dave Neale - Highways Control Engineer<br/>WCC, 01926 418 063<br/>daveneale@warwickshire.gov.uk</div>                                 | <div>Rob Young<br/>Senior Planning Officer - WDC, 01926 456535, rob.young@warwickdc.gov.uk</div>                                 |   |   |   |
| <div>Dave Mills<br/>Wright Design Management<br/>0121 222 5305<br/>dmills@wdm-ltd.co.uk</div>                                   | <div>Steve Johnstone<br/>Lawrence Walker Limited<br/>01926 632 111<br/>lwlttd@btopenworld.com</div>  | <div>Gary Stephens<br/>Development Manager - WDC<br/>01926 456 502<br/>gary.stephens@warwickdc.gov.uk</div>                      |   |   |   |
|   | <div>Steven Hayes<br/>Centro Area Manager (Coventry &amp; Solihull), 0121 214 7305<br/>stevenhayes@centro.org.uk</div>                     | <div>Tim Jackson - FPCR Director<br/>01509 672 772<br/>tim.jackson@fpcr.co.uk</div>  |   |   |   |
|   | <div>Maria –Pilar Machancoses<br/>Centro Economic Development Manager<br/>0121 214 7276<br/>maria-PilarMachancoses@centro.org.uk</div>     | <div>Steve Howlett - PHP Architects<br/>01604 858 916<br/>sh@peter-haddon.com</div>  |   |   |   |
|   | <div>Paul Tinley<br/>THDA Director<br/>0121 515 5963<br/>paul.tinley@thda.co.uk</div>  | <div>Ben Holmes – Oxalis Planning<br/>0115 984 5009<br/>ben@oxalisplanning.co.uk</div>   |   |   |   |
|   | <div>Adrian Hart<br/>Team Leader (Transport Planning), WCC<br/>01926 412111<br/>adrianhart@warwickshire.gov.uk</div>                       |  |   |   |   |

Version 2.100412



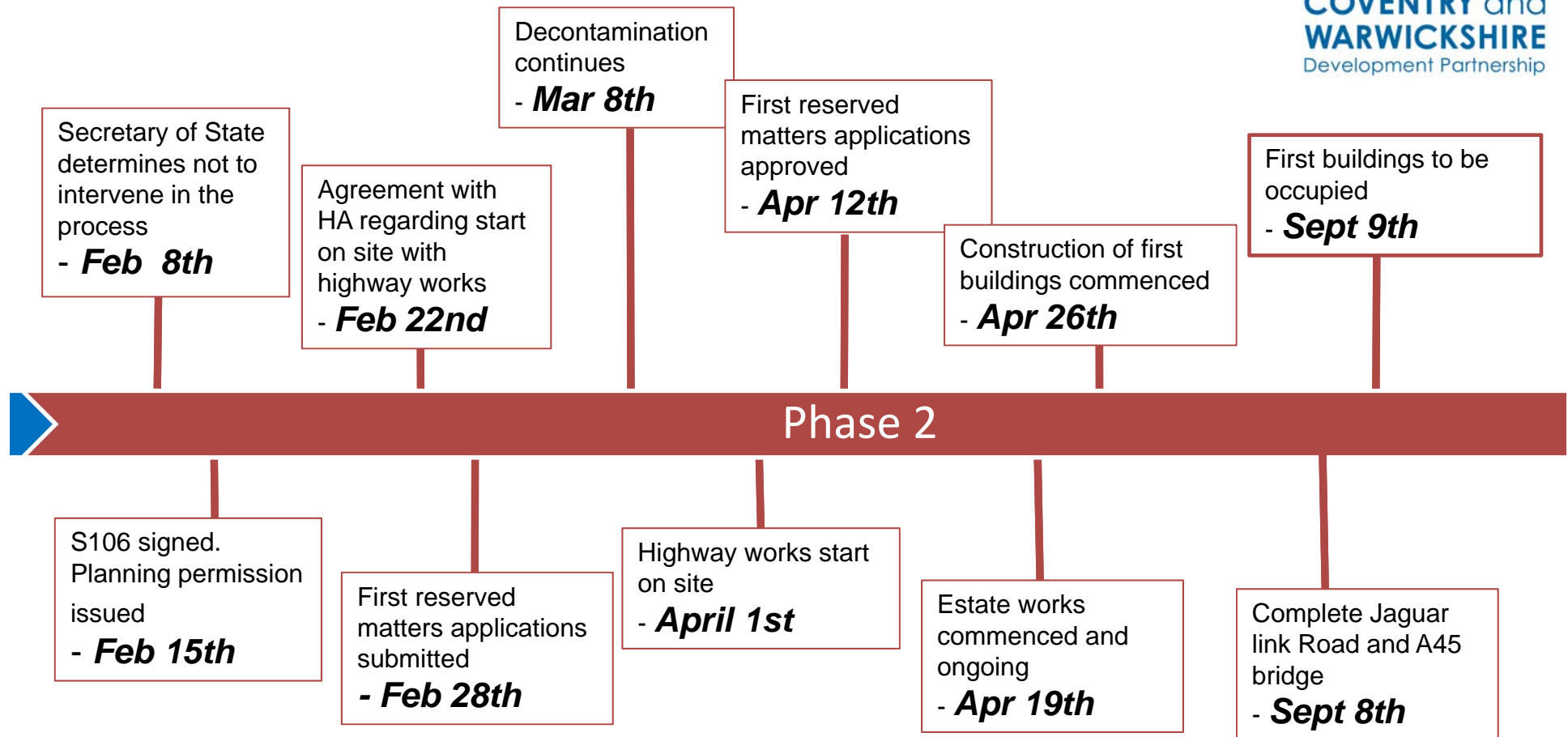
# Time Line: “Phase 1”

## 2012



# Time Line: “Phase 2”

## 2013



# True Partnership



“Could this be the first UK example of significant co-operation and collaboration between the private and public sectors comprising of three local authorities, two developers, three landowners and the Highways Agency.”



# Any Questions ?







Karen O'Donoghue, Coventry and Warwickshire First

















Resource Efficiency

Improving your business performance

Free support to help eligible Coventry and Warwickshire SMEs become more efficient by:

- Reducing waste
- Using energy wisely
- Improving legal compliance
- Making better use of raw materials
- Using environmental management systems



For more information please contact  
Business Sustain on 024 7683 2416  
or e-mail: [business.sustain@coventry.gov.uk](mailto:business.sustain@coventry.gov.uk)  
[www.business-sustain.com](http://www.business-sustain.com)

This project is part funded by the  
European Regional Development Fund

If we're going to drive growth and create jobs in our great cities we need to do things differently.

Shared ownership and leadership of place with the private sector, especially developers is an imperative

Hear about Coventry's exciting new approach and join in the discussion with:

Martin Reeves, CEO Coventry City Council  
Lawrence Hutchings MD UK Retail, Hammerson  
Director, Jaguar Land Rover  
John Till, Director of thinkingplace

Please RSVP to:  
[CoventryMIPIM2012@sectorm.co.uk](mailto:CoventryMIPIM2012@sectorm.co.uk)

## Dancing with the Devil

creating a new model of place leadership with the private sector: the Coventry story

Thurs 8th March 10-11am  
Coventry Apartment No3, La Croisette



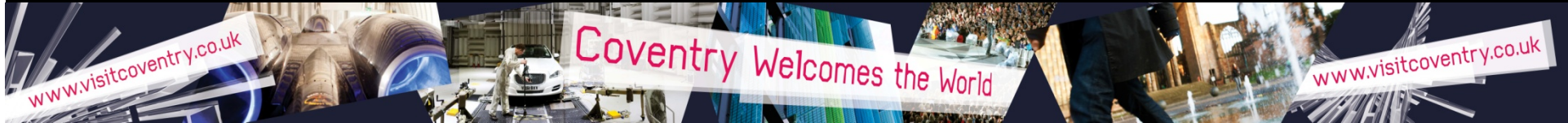
thinkingplace















# Place Board

Advent Communications

Coventry and Warwickshire

Chamber of Commerce

Coventry City Council

Coventry University

CSWP - Connexions

Jaguar Land Rover

Peugeot

Ricoh Arena

Shortland Horne

Warwickshire County Council

Alumet

Coventry and Warwickshire First

Coventry Telegraph

Creating Synergy

Henley College

Orbit Heart of England

Progressive Educational Tools

Severn Trent

University of Warwick















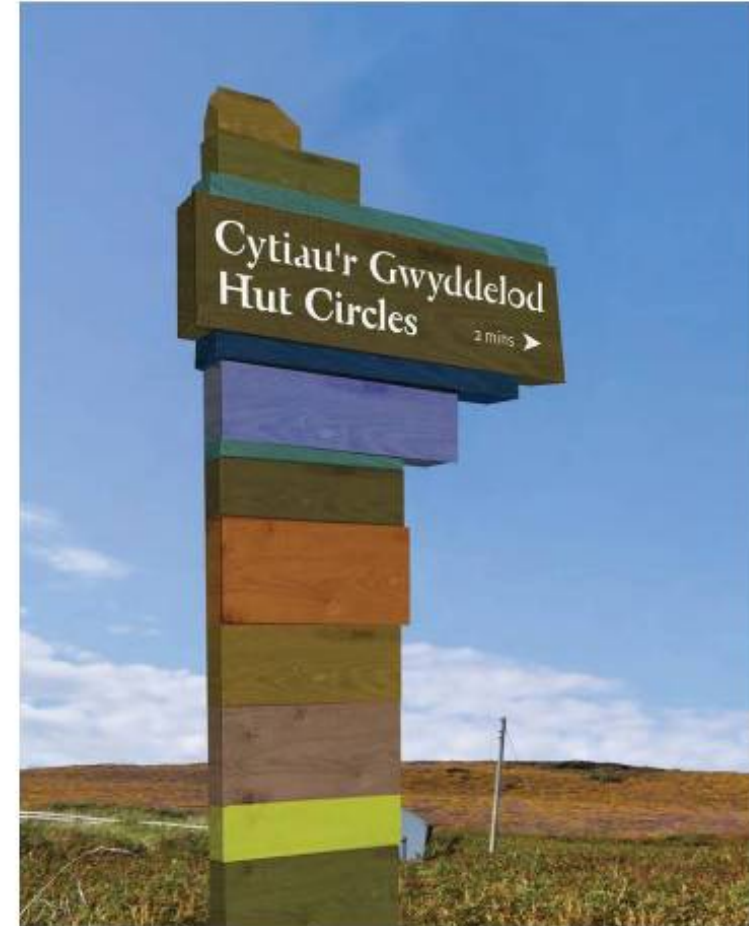
Derry-Londonderry  
Airport



## Downpatrick Cultural Quarter

Various on brand Downpatrick bench designs to cater for different needs.





## Holy Island Signage

Signage based on the strata graphic language





# Coventry and Warwickshire Champions

Advent Communications

Coventry and Warwickshire

Chamber of Commerce

Coventry City Council

Coventry University

CSWP - Connexions

Jaguar Land Rover

Orbit Heart of England

Progressive Educational Tools

Ricoh Arena

Shortland Penn and Moore

Warwickshire County Council

Alumet

Coventry and Warwickshire First

Coventry Telegraph

Creating Synergy

Henley College

Meggitt Aircraft Braking Systems

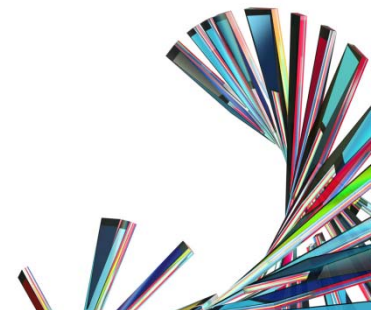
Peugeot

PWC

Severn Trent

University of Warwick

Whitefriars Housing Group





Coventry and Warwickshire

Champions

















Coventry and Warwickshire

Champions



An abstract, low-poly 3D geometric composition featuring a variety of colorful rectangular prisms and planes. The shapes are arranged in a dynamic, overlapping manner, creating a sense of depth and movement. The color palette includes vibrant reds, yellows, greens, blues, and oranges. A prominent green rectangular prism in the center-right contains the text "event central" in a white, sans-serif font. The overall aesthetic is modern and architectural, set against a plain white background.

event central

# Coventry and Warwickshire Champions

Advent Communications

Coventry and Warwickshire

Chamber of Commerce

Coventry City Council

Coventry University

CSWP - Connexions

Jaguar Land Rover

Orbit Heart of England

Progressive Educational Tools

Ricoh Arena

Shortland Penn and Moore

Warwickshire County Council

Alumet

Coventry and Warwickshire First

Coventry Telegraph

Creating Synergy

Henley College

Meggitt Aircraft Braking Systems

Peugeot

PWC

Severn Trent

University of Warwick

Whitefriars Housing Group

